



HANDBOOK

FOR

INTRASTAT DATA PROVIDERS

Part I
- Basic Handbook -



NATIONAL INSTITUTE OF STATISTICS

ROMANIA

- 2017 -

Version 1

These materials are provided only for information. It is not an official translation!

© INS 2007

Reproducing the content of this publication, completely or partly, in original or modified, as well as its storage in a retrieval system, or transmitted, in any form and by any means are forbidden without the written permission of the National Institute of Statistics.

Using the content of this publication with explanatory or justifying title, in articles, studies, books is allowed only clearly and precisely indicating the source.

Preface

The present handbook aims at providing to the economic operators, eligible for submitting Intrastat declarations to the National Institute of Statistics (INS), all the information needed in order to be able to provide correct statistical information. We emphasize that not all the economic operators have the obligation to report to Intrastat statistical system.

Three conditions have to be met for a legal entity to be considered as a party responsible for providing information to the Intrastat system:

- The economic operator is registered for VAT purposes (they have tax identification code);
- Carries out Intra-EU trade in goods;
- Total annual value of the Intra-EU trade in goods with other Member States exceeded the Intrastat thresholds established for every year, separately for *arrivals* and *dispatches* of goods (see **section 2.1**).

This handbook has been elaborated on the basis of methodological recommendations of the Statistical Office of the European Commission (Eurostat) as the basic and synthetic information material summarizing into practical form, the provisions of fundamental legal rules for running of the Intrastat system. This is intended as a tool to assist providing statistical data in Intrastat statistical system. To obtain complete basic information on Intrastat implementation, it is inevitable to get acquainted and keep applying legal provisions in force in this area.

The basic legal provisions for Intrastat statistical system in Romania are contained in the Regulation (EC) no 638/2004 of the European Parliament and of the Council of 31 March 2004 on Community statistics relating to the trade of goods between Member States, published in the Official Journal no L102 of 7 April 2004, as subsequently amended and supplemented and the Law no. 422/2006 on the organization and functioning statistical system of international trade of goods, published in the Official Journal of Romania, part I, no 967 of 4 December 2006 (see Article 10), and also the Decree of INS President regarding the value of Intrastat thresholds for the collection of statistical information concerning the Intra-EU trade in goods and the Decree of

| |
|---|
| These materials are provided only for information. It is not an official translation! |
|---|

INS President regarding the filling in standards of the Intrastat Statistical Declaration.

The legislative texts mentioned above can be found on the site www.intrastat.ro.

For better understanding, the Handbook for Intrastat Data Providers is divided into two parts. ‘Part I – The Basic Handbook’ contains the necessary information for help the economic operators to complete an Intrastat declaration quickly and efficiently, while ‘Part II – The Extended Handbook’ goes into more detail on certain aspects of Part I.

National Institute of Statistics

Table of Contents

| | |
|---|-----------|
| Preface | 3 |
| I. Important change in filling in Intrastat statistical declaration applicable starting with the reporting month January 2017 | 7 |
| II. Practical advices: | 8 |
| 1 General Background | 9 |
| 1.1 About Intrastat..... | 9 |
| 1.2 Usefulness of Intrastat statistical system and international trade statistics | 9 |
| 2 Intrastat Statistical Declaration: General overview..... | 11 |
| 2.1 Obligation to report data to Intrastat system | 11 |
| 2.2 Third Party Declaring (TPD)..... | 15 |
| 2.3 How to submit Intrastat declarations to INS?..... | 15 |
| 2.4 Registration procedure..... | 16 |
| 2.5 Confidentiality..... | 17 |
| 3 Deadlines for submitting declarations - When starts and when stops reporting obligation?..... | 18 |
| 3.1 Periodicity and deadlines for submitting Intrastat statistical declarations..... | 18 |
| 3.2 When starts / stops declaring obligation? | 18 |
| 3.2.1 When starts declaring obligation? | 18 |
| 3.2.2 When stops declaring obligation? | 20 |
| 3.3 When should be reported the Intra-EU trade in goods in the Intrastat declaration?..... | 20 |
| 4 Declaring Facility and Media | 21 |
| 5 What should be declared and what not?..... | 23 |
| 5.1 Intra-EU trade in goods to be declared for Intrastat system | 23 |
| 5.2 Transactions to be excluded from Intrastat..... | 25 |
| 6 Data to be provided in the Intrastat declaration | 27 |
| 6.1 Basic Information | 27 |
| 6.2 Information to be provided at declaration level | 27 |
| 6.2.1 PSI, identification code trade partner of PSI and third party declarant – identification details | 27 |
| 6.2.2 Reference period..... | 29 |
| 6.2.3 Flow: Arrivals / Dispatches | 29 |
| 6.2.4 Type of declaration..... | 29 |
| 6.3 Information to be provided at commodity level | 29 |
| 6.3.1 Commodity Code: Combined Nomenclature 8-digits code..... | 29 |
| 6.3.2 Country of destination / expedition / origin | 30 |
| 6.3.3 Net mass in whole kg | 32 |
| 6.3.4 Supplementary units..... | 32 |
| 6.3.5 Invoiced value stated in LEI | 33 |
| 6.3.6 Statistical value | 36 |
| 6.3.7 Nature of transaction | 42 |
| 6.3.8 Mode of Transport | 43 |

These materials are provided only for information. It is not an official translation!

| | | |
|---|--|-----------|
| 6.3.9 | Delivery Terms | 43 |
| 6.4 | Revisions of data..... | 45 |
| 6.4.1 | Revision Declaration before Submitting | 45 |
| 6.4.2 | Revision Declaration after Submitting to INS | 45 |
| 7 | Where to find basic information? | 47 |
| 8 | Overview of the use of application for submitting declarations | 48 |
| 8.1 | Intrastat on-line application | 48 |
| 8.2 | Intrastat Off-line application | 48 |
| 8.3 | Predefined declaration file format | 49 |
| 8.4 | Advantages of using the Intrastat web-service or the Intrastat Off-line application | 49 |
| 9 | Help-desk..... | 51 |
| 10 | Legal basis and penalties | 52 |
| 10.1 | European Legislation | 52 |
| 10.2 | National legislation..... | 53 |
| 10.3 | Penalties | 53 |
| Annexes | | 55 |
| Annex 1. Codes of countries and territories..... | | 56 |
| Annex 3. Codes of type of transactions..... | | 65 |
| Annex 4. Codes of modes of transport | | 67 |
| Annex 5. Codes of delivery terms..... | | 68 |
| Annex 6. List of supplementary units | | 69 |
| Annex 7. Glossary | | 70 |
| Annex 8. Distance in kilometers between main European cities ... | | 73 |
| Annex 9. Distance in kilometers between main cities of Romania | | 74 |

These materials are provided only for information. It is not an official translation!

IMPORTANT INFORMATION FOR INTRASTAT STATISTICAL INFORMATION PROVIDER IN 2017

I. Important change in filling in Intrastat statistical declaration applicable starting with the reporting month January 2017

➤ *Increasing the Intrastat threshold value for arrivals of goods*

Starting from 1.1.2017 the Intrastat threshold for *arrivals of goods* rose to 900,000 LEI. The Intrastat threshold for *dispatches of goods* in 2017 remains the same as in the previous year, at 900,000 LEI.

Thus, in 2017, the economic agents which achieved a total value of intra-Community dispatches exceeding **900,000 LEI** and / or volume of arrivals of goods exceeding **900,000 LEI** should complete and submit to the INS the Intrastat statistical Declaration.

For further details you can consult on the website www.intrastat.ro:

- **the Legislation section:**

- Decree of the President of the National Institute of Statistics no. 103/2016 regarding Intrastat thresholds for the collection of statistical information regarding the intra-Community trade with goods in 2017 (Journal of Romania, Part I, no. 1005 from 14 December 2016);
- Decree of the President of the National Institute of Statistics no. 1475/2016 regarding the approval of the Filling in Standards of the Intrastat Statistical Declaration (Journal of Romania, Part I, no. 6/04.01.2013)

- **the Methodology section:**

- Handbook for Intrastat data providers - part I, chapter 2.1 Obligation to report data to Intrastat system

➤ *Modified nomenclatures:*

Version 2017 of the Combined Nomenclature contains 687 new codes at 8-digit level while 573 codes at 8-digit level were removed from the version 2016 of the CN. Total

These materials are provided only for information. It is not an official translation!

number of CN codes at 8-digit level is 9534. Combined Nomenclature is available in electronic format on the website www.intrastat.ro.

➤ ***Modified nature of transaction nomenclature***

Nature of transaction nomenclature was modified, so for 2017 came into force a new version of it (for details see Handbooks for Intrastat data providers). New codes were introduced for Nature of Transaction:

- Transaction code 9.2 Indirect trade
- Transaction code 4.3 Goods for processing, treated as assimilated intracommunity acquisitions/ deliveries from fiscal point of view
- Transaction code 5.3 Goods obtained after processing of goods previously declared under code 4.3

II. Practical advices:

1. Spend some minutes on obtaining an overview of this Handbook, and use it as a manual to Intrastat, which you can consult every time it is necessary.
2. Be careful when you fill in your information in the declaration, especially the commodity codes and partner country codes, as any errors may imply that INS will contact you at a later time. Check any changes to the commodity codes that you have previously used. For the purpose of codification of the goods according to the Combined Nomenclature at 8-digit level (CN8), please contact the National Agency of Fiscal Administration.
3. Respect the deadlines for submission of Intrastat declarations to INS or you may have to pay a fee for non-responding.
4. You may use services of third party declaring (accountant etc.) to take care of the practical part of making Intrastat declarations for your firm.
5. We recommend that you keep a copy of your Intrastat submitted declarations, to be able to justify further information in declarations provided to the INS.
6. Note also that declarations files send via mail (by post) or other ways than those listed above are not accepted by INS.

1 General Background

1.1 About Intrastat

Intrastat is a system for collecting statistical data on trade in goods between Member States of the European Union (EU). The Intrastat statistical system became operational on January 1, 1993, with the creation of EU Single Market, when the customs check on the EU internal border disappeared. Therefore the opportunity to use the data from customs declarations for the compilation of the foreign trade statistics also disappeared. Consequently, the requirement for collecting data directly from the economic operator involved in the Intra-EU trade in came into force.

Intrastat statistical system is referring only to the trade in goods between EU Member States, so trade in services is excluded from this system.

In the Intrastat system aims physical flow of goods within the meaning of the entry / exits them to / from Romania, from / to destination another EU Member State, irrespective of the monetary or tax documents circuit. The Intrastat statistical system is based on the principles determined by the EU regulations that apply in all EU Member States. However, the practical application differs in the individual Member States.

One of the main features of the Intrastat statistical system is to collect information directly from the economic operators that carrying out Intra-EU trade in goods and they are registered for VAT. Intrastat system refers only to trade in goods between Romania and the other EU Member States. Statistics on exchange of goods with third countries (non-EU countries) must not be declared on the Intrastat system, they are compiled according to the Extrastat statistical system, based on the customs declarations.

Currently in EU Member States statistics of international trade in goods as whole are compiled using data from both statistical systems, Intrastat, respectively Extrastat.

The statistics on international trade in goods are produced in Romania by the National Institute of Statistics (INS), in collaboration with the Ministry of Public Finance (MPF). These statistics on foreign trade in goods, are monthly produced and disseminated by the National Institute of Statistics, are also sent to Eurostat (Statistical Office of European Commission), according to European regulations in force.

1.2 Usefulness of Intrastat statistical system and international trade statistics

Intrastat statistical declarations are the basis for the compilation of statistics on trade in goods with other EU Member States. The trade in goods statistics is important both for the public and private sectors, for the decision-makers and planners at the global level as well as at the EU level, for Romania as for EU Member States and for particular economic operators.

These materials are provided only for information. It is not an official translation!

The detailed statistical data on economic exchanges of goods between Romania and the other countries of the world point out the economic performances of our country.

At the EU level, the data collected under the Intrastat system are necessary for the monitoring the EU Single Market, economy as well as for the preparations of political and commercial negotiations.

The EU Council of Ministers has declared that information on trade in goods between Member States is important in order to show the development of the Single Market. This must be based on detailed information about exchange of goods in order to shed light on exchange of goods with commodities within the community and its Member States of different sectors of economy.

The volume of goods exported to and imported from other countries is used when making assessments and forecasts on the development of transports infrastructure and on other economic fields contributing to properly carrying out international exchange of goods.

Moreover, national statistics are sent to various European and international bodies, such as European Commission, United Nations Statistical Division, International Monetary Fund etc., based on which databases necessary for international comparisons and for drawing up medium and long term strategies on countries development are created etc.

Finally, for private economic operators circulation of specific product within EU may be an area of interest for planning investment strategies, development strategies etc.

2 Intrastat Statistical Declaration: General overview

2.1 Obligation to report data to Intrastat system

According to national and European legal provisions in force, Intrastat declaration is mandatory for the movements of goods between Romania and the other Member States of the European Union.

From statistical point of view, goods that arrive on the national territory of Romania from other EU Member States are called *arrivals*, and goods that leave the national territory of Romania for other EU Member States are called *dispatches*.

Who is required to declare and for which flow of goods?

In order to satisfy users' needs for statistical information without imposing excessive burdens on the providers of Intrastat statistical information, Member States shall define, each year, **statistical exemption thresholds** expressed in annual values of Intra-EU trade in goods below which parties are exempted from providing any information for the Intrastat statistical system.

In Romania, for 2017, the economic operators obliged to submit Intrastat statistical declarations to INS must have an annual amount of dispatches of goods exceeding 900,000 lei and/or of arrivals of goods exceeding 900,000 lei.

So,

- An economic operator whose annual arrivals total is equal to or more than 900,000 lei is required to declare for the “arrival” flow.
- An economic operator whose annual dispatches total is equal to or more than 900,000 lei is required to declare for the “dispatch” flow.

An economic operator may therefore be required to declare for Intrastat system neither or only one of or both flows of goods, depending on the value of his Intra-EU trade.

Sources of information for Intrastat system

For the year 2017, the economic operators required to submit Intrastat declaration **are selected** based on the Intrastat declarations, on the data field in the VAT returns and the recapitulative declarations regarding dispatches /arrivals of Intra-EU trade in goods (form 390 - VIES) submitted by Ministry of Public Finance for the year 2016.

Economic operators which become Intrastat data providers for current year **are monitored** based on the data field in the VAT returns and in the recapitulative declarations regarding dispatches /arrivals of Intra-EU trade in goods (form 390 - VIES) submitted by Ministry of Public Finance.

It should be noted that **the flow of information between Ministry of Public Finance and Romanian National Institute of Statistics is only one way. The Ministry of Public Finance supplies to Romanian National Institute of Statistics the data from VAT returns and recapitulative declarations regarding dispatches /arrivals of Intra-EU trade in goods (form 390 - VIES), but Romanian National Institute of**

These materials are provided only for information. It is not an official translation!

Statistics does not submit, under any circumstances, any statistical information to Ministry of Public Finance.

Types of statistical declarations depending on the annual amount of traded goods

| <i>Type of declaration</i> | <i>Arrivals</i> | <i>Dispatches</i> |
|---|--|--|
| No obligation to submit Intrastat declaration to INS | Less than 900,000 lei | Less than 900,000 lei |
| Standard declaration (all information, excepting statistical, value are required) | Equal to or more than 900,000 lei and less than 10,000,000 lei | Equal to or more than 900,000 LEI and less than 20,000,000 lei |
| Extended declaration (all information, including statistical, value are required) | Equal to or more than 10,000,000 LEI | Equal to or more than 20,000,000 LEI. |

Remark: If an economic operator is required to submit Intrastat statistical declarations for both flows of goods, it is possible to be required to submit a standard declaration for one flow and an extended declaration for the other flow. In this case, the economic operator is permitted to submit an extended declaration for both flows.

The Intrastat declaration must be submitted by the economic operators that exceed the Intrastat threshold in the year 2016 or during the year 2017, separately for Intra-EU arrivals and dispatches of goods. Thereby, these economic operators become **Providers of Statistical Information (PSIs)**.

For the year **2017**, Providers of Statistical Information are:

- a) the economic operators that had to report for Intrastat statistical system for the **whole year 2016** and the value of their community trade has exceeded the Intrastat exemption threshold established for 2017, separately for arrivals and dispatches of goods, during the whole year 2016. They must fill in and transmit Intrastat declaration for the whole year 2017.
- b) the economic operators that **got** the obligation to report for Intrastat statistical system **during year 2016**, by exceeding the Intrastat thresholds established for 2016, separately for arrivals and dispatches of goods. They must fill in and transmit Intrastat declaration for the whole year 2017.
- c) the economic operators that **exceed** the Intrastat exemption threshold, separately for arrivals and dispatches of goods, **during the year 2017**. The obligation to report for Intrastat statistical system begins in the month in which cumulative value of Intra-EU trade in goods, from the beginning of the year 2017, exceeds the Intrastat exemption threshold, separately for arrivals and dispatches of goods.

These rules apply equally:

- to economic operators whose annual value of Intra-EU trade in goods exceeds the Intrastat threshold,

| |
|---|
| These materials are provided only for information. It is not an official translation! |
|---|

- to economic operators who initiate Intra-EU trade of goods for the first time in 2017, and
- to economic operators new registered for VAT (they have unique tax identification).

The statistical threshold for statistical value is applied to those Providers of Statistical Information who in the year 2016 or during the year 2017 registered an amount above the level of statistical threshold established for 2017: 10,000,000 lei for arrivals and respectively above 20,000,000 lei for dispatches. This rule is stipulated in the community legislation for reducing the burden of the small and medium economic operators.

Note that the thresholds are different for each flow (arrivals/dispatches) and that they are updated every year. INS will announce the thresholds for the following year in the Official Journal of Romania, Part I, in December of this year.

Some important issues have to be kept in mind:

There are three conditions when an economic operator becomes a Provider of Statistical Information (PSI):

1. The economic operator is registered for VAT (has fiscal identification code);
2. Carries out Intra-EU trade in goods;
3. The annual turnover from arrivals and/or dispatched with other member states of EU, for each flow is above the value of Intrastat thresholds established for every year.

Economic operators which during a reference year run exchanges of goods with EU member states, with an cumulative annual value from the beginning of the year, separately by each flow, arrivals or dispatches of goods, pass over the thresholds established for the reference year, must fill in the Intrastat statistical declarations and submit them to INS starting with the month when the thresholds are exceeded and for all the next year of the reference year.

Data regarding arrivals and dispatches of goods from the beginning of the year to the end of month preceding the month in which the Intrastat threshold was exceeded shall not be reported to Intrastat.

According to Law no. 422/2006, the legal term for submitting Intrastat declaration is **15 calendar days** from the end of reference month.

When the PSI exceeds the Intrastat threshold, it shall be obliged to start reporting relevant data for Intrastat separately for arrivals and/or dispatches of goods (**without being called by National Institute of Statistics or the Territorial Statistical Department to do so**) for the first time for the data for the month in which the Intrastat threshold for each flow was exceeded.

These materials are provided only for information. It is not an official translation!

IT IS YOUR RESPONSIBILITY TO MONITOR YOUR EU EXCHANGES OF GOODS TO DETERMINE WHEN YOU HAVE TO SUBMIT INTRASTAT STATISTICAL DECLARATION according to the law.

If the PSIs are not required to provide Intrastat declaration at the start of year, they must monitor their exchanges of goods and if, at the end of a certain month of reference year, the cumulative value of the EU exchange of goods from 1st January of the current year, for either arrivals and/or dispatches exceeds the threshold, he must notify INS fill in and submit the “*Questionnaire for PSIs*” downloadable from www.intrastat.ro, and then he must submit Intrastat declaration for the month when the threshold has exceeded. From now on, the Intrastat declaration will be transmitted monthly to National Institute of Statistics for the rest of calendar year, including the month in which the threshold is reached and for the whole next year, also.

For example, an economic operator whose cumulative total of arrivals during 2017 reached 900,000 lei in April 2017 would need to complete and to submit Intrastat declaration for arrivals from April 2017 to December 2018 (for details see **Chapter 3.2** from this manual).

Provider of Statistical Information (PSI) is always obliged to declare for Intrastat till the end of year when the Intrastat thresholds are exceeded and also for the following calendar year.

After a calendar year during which cumulative value of Intra-EU trade in goods of the PSI has not exceeded the thresholds, neither for arrivals nor for dispatches, the Intrastat obligation stopped starting with January next year. This is valid only if during this next year, the thresholds are not again exceeded. The above rules will be applied once again, separately for arrivals and dispatches.

Any change in the Intrastat thresholds, usually announced on current December for the following year, does not affect the obligation of providing Intrastat declaration for the current year.

If the Provider of Statistical Information uses a **third party declaring (TPD)** for completion and submission of Intrastat statistical declaration, **he will must prove the existence of a contract between him and the third party declaring for submitting Intrastat declaration by the third party in the name of provider and transmit it to the Romanian National Institute of Statistics.** A third party declaring may submit data for an economic operator only if INS registered him in consequence of PSI's request.

Also, the end of relationships between a provider of statistical information and a third party declaring must be notified to INS. This notification to the National Institute of Statistics will be made by fax (**021.318.18.58, 021.311.50.42**) or by email (intrareg@insse.ro).

If, in any **calendar month**, there is no transaction concerning the movement of goods for which the economic operator is obliged to submit the Intrastat declaration, then the economic operator must send to INS a "**null**" **Intrastat declaration**. This indicates that the economic operator has fulfilled the reporting obligation and has not forgotten to send the declaration to the INS, therefore it will not be treated as non-respondent, and so the legal penalty will not be applied.

When calculating the annual amount of trade in goods in order to establish reporting obligations (whether or not exceed the statistical threshold), please

These materials are provided only for information. It is not an official translation!

note that in the total Intra-EU trade, moving between Romania and other EU member states, is included the value of goods involved in the processing – raw materials for processing – for arrivals flow and value of goods after processing (value of raw materials and of manufacturing price of goods obtained after processing).

More information regarding the methodology applied in the case of processing operations are presented in *the chapter 5 – “Processing of goods”* from the **Handbook for Providers of Statistical Information**, part II.

2.2 Third Party Declaring (TPD)

The economic operator obliged to provide Intrastat statistical information - PSI - may ask for the services of another company/agent (third party declaring - TPD) in order to complete and submit its Intrastat statistical declaration.

The responsibility for the accuracy of the data, however, always remains to the economic operator obliged to provide Intrastat information, according to the article 7(2) of the Regulation (EC) No. 638/2004 of the European Parliament and of the Council on statistics relating to the trading of goods between Member States, as subsequently amended and supplemented, and art. 6(2) of the Law no.422/2006 on the organization, and activity of the statistical system of international trade in goods.

If the Provider of Statistical Information uses a third party for completion and submission of Intrastat statistical declaration, he will must prove the existence of a contract between him and the TPD for submitting Intrastat declaration in the name of provider and transmit it to the Romanian National Institute of Statistics. **A third party declaring (TPD) may submit data for an economic operator only after its registration by INS following the written request of PSI. TPD must have a tax reference number issued by the tax authority in Romania. This is necessary because in the IT Intrastat online and offline applications cannot be registered foreign tax codes.**

Also, the end of relationships between a provider of statistical information and a third party declaring must be notified to INS by email (intrareg@insse.ro) or by fax (021.318.18.58 or 021.311.50.42).

2.3 How to submit Intrastat declarations to INS?

According to the Law no.422/2006, in Romania paper declarations are not accepted and all declarations must be submitted to INS electronically. There are 3 different ways to **submit the Intrastat declaration electronically**.

These are:

- a) e-mail, at the following address: declaratie.intrastat@insse.ro;
- b) uploading the file to related Intrastat web service available at www.intrastat.ro, section “Intrastat Declaration”;
- c) If the PSI does not have access to the Internet to submit Intrastat statistical declaration under paragraphs a) or b), will copy the file Intrastat declaration (file extension .xml or .enc) on a CD/USB and will contact the Territorial Statistical

These materials are provided only for information. It is not an official translation!

Department in whose area is his headquarters, asking for the possibility to transmit by e-mail the file containing the Intrastat Statistical Declaration to the INS, central office or he will transmit the declaration from any other computer with Internet access, using options a) or b) presented above.

INS recommends you to use the on-line application from the website or the off-line application provided by INS, as they contain some predefined validation rules for creating a correct and valid Intrastat declaration.

It should be kept in mind that each economic operator, depending on its total value of arrivals/dispatches is eligible for submitting either declaration for one flow or both flows. So, PSI should check periodically in which category fits.

Further information about the use of applications (on-line or off-line) to create Intrastat declarations in electronic form is available on the website www.intrastat.ro as well as in the offline application (also available on www.intrastat.ro).

Paper submissions of Intrastat declarations are not accepted!

Note: Updated versions of the Intrastat application could be available, during a reference year in order to improve the provided functionalities. For this reason, we strongly advise to visit the website www.intrastat.ro often in order to update your IT declaring tools. The same principle could be applied for methodological handbooks and user guides.

2.4 Registration procedure

On-line registration procedure is only required for PSIs or TPDs who plan to use the Intrastat web system (on-line application) to submit their Intrastat declarations.

For those PSIs who will choose to use the **off-line** application, it is required to fill in the “*Questionnaire for PSIs*”, from the INS website www.intrastat.ro and to send it by fax (**021.318.18.58, 021.311.50.42**) or by email (intrareg@insse.ro) to INS, in order to be included in the database with the correct identification data and contact details.

Therefore, in order to be able to submit **on-line** declaration a PSI or a TPD must be registered. To do this the PSI or TPD must complete a web registration form at the following address www.intrastat.ro.

INS will process the registration request and send automatically an e-mail containing the registration code and a password needed in order to access the on-line Intrastat system.

The user of the on-line Intrastat system will be able to submit declarations either by uploading a declaration file or by using the web-declaration form that allows for on-line data entry of declaration information.

A TPD when logs in the Intrastat on-line system will have to declare the economic operator (through the appropriate Intrastat on-line application) for which is responsible to provide Intrastat declarations (clients).

Also, if a TPD is a PSI too, the on-line system allows sending declarations both for economic operators (clients) represented by the respective TPD and also for itself (directly from the account created as TPD).

| |
|---|
| These materials are provided only for information. It is not an official translation! |
|---|

Supplementary information regarding the on-line application for data collection are available in the “*User guide for Intrastat on-line application (web)*”, downloadable from www.intrastat.ro, section “Intrastat Declaration”.

2.5 Confidentiality

Data submitted to Intrastat are treated in confidence and are used only for statistical purposes, according to legal national and European provisions applicable to international trade in goods statistics domain.

Intrastat system applies the principle of passive confidentiality, respectively privacy rules are applied to statistical data only if the economic operator requests confidentiality for its data and this request is solid argument.

According to the EU Regulation, all EU Member States apply the principle of “passive confidentiality” for international trade data, that is INS takes appropriate measures to make confidential data only at the request of the economic operators who feel that their interests (economic, commercial or other) would be harmed by the dissemination of data at CN 8 digits level by INS.

Data can be classified as confidential for both types of exchange of goods flows (arrivals or dispatches); confidentiality can concern, value and quantity variables, all the partner countries or a particular partner country of the applicant economic operator.

The written request for confidentiality must be addressed to INS. In the request that PSI will submit for confidentiality purpose for international trade in goods statistics, it is mandatory to specify **arguments** based on confidentiality, the **time period** for which confidentiality is requested, **commodity codes and/or partner country and the flow** for which the confidentiality is going to be applied.

3 Deadlines for submitting declarations - When starts and when stops reporting obligation?

3.1 Periodicity and deadlines for submitting Intrastat statistical declarations

Completed declarations containing information about all the arrivals and / or dispatches **of a given month** shall be transmitted to INS, for each flow, with **monthly periodicity**.

The deadline for the submission of Intrastat declaration is the **15th** of the month following the month when the arrival or dispatch occurred. The month for which the declaration is made is usually referred to as the '**reference month**'.

For example, the declarations for January 2017 (reference month) must be submitted to INS no later than the 15th of February 2017. Otherwise, the PSIs who did not send declarations are considered as non-respondents and a penalty could be enforced for them, according to Law no.422/2006.

It is important to note that:

- Revision of the submitted data is allowed. For more details, *see section 6.4 Revisions of data*.
- A PSI without registering arrivals and / or dispatches of goods in a reference month **must submit to INS a null declaration** until the deadline, otherwise it is considered as not having submitted the declaration (non-respondent) and a penalty could be enforced.
- According to the national legislation, the PSIs are obliged not only to provide information but this information must be **correct and complete**. A penalty can be also enforced, according to Law no.422/2006, in case of transmitting incorrect, incomplete or delayed declarations.
- INS will make consistency data checks in declarations and the PSIs could be contacted to provide more details and check the data transmitted or to be asked to submit an amendment / revision of the declaration (either by changing existing information or by adding new information about arrivals/dispatches of goods).

3.2 When starts / stops declaring obligation?

3.2.1 When starts declaring obligation?

The obligation to report data starting with reference month January 2017 will belong to those economic operators whose amount of exchange of goods with EU Member States in 2016 are over the threshold defined by INS separately by each flow (dispatches and arrivals).

These materials are provided only for information. It is not an official translation!

In the current year other economic operators can become PSIs, applying the following rules:

- Economic operators whose **arrivals** exceed the threshold established for arrivals during the year “n” (e.g. 2017) are required to submit declarations for that flow of goods from the month in which that threshold is exceeded. These economic operators must continue to declare their arrivals until the end of year “n +1” (e.g. 2018).
- Economic operators whose **dispatches** exceed the threshold established for arrivals during the year “n” (e.g. 2017) are required to submit declarations for that flow of goods from the month in which that threshold is exceeded. These economic operators must continue to declare their dispatches until the end of year “n+1” (2018).
- Economic operators, which take over the activity of another economic operator, which is required to submit Intrastat statistical declarations, must start to declare immediately for the Intrastat statistical system. In fact they take over the declaring obligation in the Intrastat statistical system of this economic operator.

The obligation to submit Intrastat declarations is defined as following:

In 2017, the obligation is defined based on data field in the Intrastat declarations, on the data field in the VAT returns and the recapitulative declarations regarding dispatches /arrivals of goods (form 390-VIES) submitted by Ministry of Public Finance in 2016.

Monthly, Ministry of Public Finance provides INS with data from the VAT and the recapitulative declarations regarding dispatches / arrivals of goods (form 390-VIES) which includes the value of arrivals and dispatches of goods from the exchange of goods with other Member States of the European Union.


During 2017, the obligation may appear for those economic operators whose total value arrivals or dispatches for the beginning of the year reached the level of threshold for at least one flow, arrivals or / and dispatches.

INS also monitors the Intra-EU trade in goods based on fiscal declarations submitted to Ministry of Public Finance, but keep in mind that

IT IS THE ECONOMIC OPERATOR RESPONSIBILITY TO MONITOR THE EU EXCHANGE OF GOODS TO DETERMINE WHEN STARTS TO SUBMIT INTRASTAT STATISTICAL DECLARATION TO INS.


In practice, the obligation to submit Intrastat statistical declaration commences with the month when the value of statistical threshold for exclusion is reached for corresponding flow.

DO NOT REPORT THE INTRACOMMUNITY VALUES RELATED TO THE MONTHS PRECEDING THAT IN WHICH WAS ACHIEVED THE REQUIREMENT TO SEND INTRASTAT STATISTICAL DECLARATIONS SINCE THE BEGINNING OF THE YEAR UNTIL THE THRESHOLD IS REACHED!

 **Example for arrivals:** the value of goods purchased by a company from other EU member states is 870,000 lei at the end of April 2017; in May 2017 the company

These materials are provided only for information. It is not an official translation!

purchases goods worth 80,000 lei, thus exceeding the threshold of 900,000 lei; the first Intrastat declaration that a company will submit to National Institute Statistics will be for May 2017 and will be reported only purchases for May 2017, worth 80,000 lei.

 **Example for dispatches:** the value of goods delivered by a company to other EU member states is 850,000 lei at the end of July 2017; in August 2017 the company delivers goods worth 100,000 lei, thus exceeding the threshold of 900,000 lei; the first Intrastat declaration that a company will submit to National Institute Statistics will be for August 2017 and will be reported only deliveries for August 2017, worth 100,000 lei.

After this, the obligation for submitting Intrastat declaration is in force without interruption (*see section 3.2.2 “When stops declaring obligation?”*)


3.2.2 When stops declaring obligation?


- **Starting with January of the year following that** when total values of Intra-EU trade in goods, by each flow of goods, does not reached the level of statistical thresholds of exclusion established for next year.
- **Immediately:** If economic operator required making the Intrastat declaration, closes or interrupts his activity in the course of year (bankruptcy, acquisition, closure). This economic operator must inform INS concerning any changes in his legal status. Informing must be done in written and must be signed and stamped by legal representative of respective economic operator and will be send it to National Institute of Statistics by **fax (021.318.18.58, 021.311.50.42)** or by **e-mail (intrareg@insse.ro)**.

3.3 When should be reported the Intra-EU trade in goods in the Intrastat declaration?

Intra-EU trade in goods must be reported in the month when the **physical movement of goods across the border of Romania**.

Dispatch /introduction of goods **from/to national territory of Romania** will be included in the Intrastat statistical declaration in the month when **physical movements of goods** took place, regardless of the flow of tax documents or money.

 **Example 1:** If a firm submitting Intrastat declarations on the flow of arrivals, received goods in August and the invoice was issued in July, in the Intrastat declaration will report these goods in the declaration of August and the invoiced value will be at **the exchange rate established by National Bank of Romania of the reception day of the goods**.

 **Example 2:** If a firm submitting Intrastat declarations on the flow of arrivals, received goods in August and the invoice arrives in September, will report these goods in the Intrastat declaration of August, estimating the value of goods at market value of these products at **the exchange rate established by National Bank of Romania of the reception day of goods**;

4 Declaring Facility and Media

Intrastat declaration may be submitted either by the economic operator who performed Intra-EU trade in goods or a third party declaring. In any case, **the economic operator is solely responsible for the information provided to INS.**

Declarations must be submitted electronically.

INS offers 3 different ways to submit the declaration electronically. These are:

1. Via **Intrastat on-line application** available on the Intrastat on-line application accessible at www.intrastat.ro.

In order to obtain access to Intrastat on-line it is necessary to go through a process of registration, the user must introduce into the system identifying information about economic operator. The absolute confidentiality of data recorded is assured according to national and European provisions in force applicable to international trade in goods statistics domain.

The Intrastat on-line application offers real time validation of information entered, and provides facilities such as pop-up menus and drop down lists to select the appropriate choices in order to fill up the declaration. In several steps there are helpful menus to guide the declarant and prevent entering incorrect codes. Note that this approach will not be useful if the entries are quite large or the connection to the web is not quick. However it is the simplest way to submit a declaration and it is recommended for small number of records.

2. Via **Intrastat off-line application** accessible on www.intrastat.ro or provided by INS, free of charge, upon the request. The application provides a form, for filling up the declaration, equipped with facilities that offers real time validation of information entered, pop-up menus and drop down lists to select the appropriate choices in order to make easier the data entry. Using the off-line application the declarant does not need to be connected to the Internet during the time spent while completing the declaration. So, he can fill the declaration off-line, and send it later to INS in one of the following:

- a) via e-mail at the following address declaratie.intrastat@insse.ro
- b) via the “Upload declaration” function of the “Declaration” menu available through the Intrastat web service (www.intrastat.ro). This assumes registration with the Intrastat on-line application.
- c) If the statistical information provider does not have access to the Internet to submit the Intrastat statistical declaration under paragraphs a) or b), will copy the file Intrastat declaration (file extension **.xml** or **.enc**) on a CD/USB and will contact the Territorial Statistical Department in whose area is his headquarters, asking for the possibility to transmit by e-mail the file containing the Intrastat Statistical Declaration to National Institute of Statistics, central office or he will transmit the declaration from any other computer with Internet access, using the option a) or b) presented above.

These materials are provided only for information. It is not an official translation!

This way of submission is suitable for both small declarants who have to report a small volume of Intra-EU trade in goods and declarants who have to report thousands of lines in declaration every month.

3. Via declaration files that follow a predefined format, which are in conformity with INS requirements. For creating a declaration file the economic operator should follow a predefined format for which details can be found in the “*Description Manual of the procedure for creating other types of files accepted by INS*” on www.intrastat.ro. This option is particularly suitable to declarants with a large number of transactions that use their own application and which can be adapted to produce the declarations files according to the predefined format.

Please ensure that the format has been followed as otherwise the declaration will be returned.

The created files must be sent to INS:

- i) via e-mail at the following address declaratie.intrastat@insse.ro;
- ii) via the “Upload declaration” function of the “Declaration” menu available through the Intrastat web service (www.intrastat.ro). This assumes registration with the Intrastat web service.
- iii) If the statistical information provider does not have access to the Internet to submit Intrastat statistical declaration under paragraphs a) or b), will copy the file Intrastat declaration (file extension .xml or .enc) on a CD/USB and will contact the Territorial Statistical Department in whose area is his headquarters, asking for the possibility to transmit by e-mail the file containing the Intrastat Statistical Declaration to National Institute of Statistics, central office or he will transmit the declaration from any other computer with Internet access, using the option a) or b) presented above.

Further information on use of applications (on-line or off-line) to create Intrastat declarations in electronic form can be found on the website www.intrastat.ro, “Intrastat Declaration” section.

Some important issues are the following:

- Updated versions of application will be available later in order to improve the provided functionalities. For this reason we strongly advice to visit periodically the Intrastat web site in order to check for possible updates.
- The password provided for the web system is strictly personal and it must not be communicated / used for any other persons.
- Is recommended to keep a hard copy (in addition to an electronic copy) of the Intrastat declaration in case where INS contacts you. In order to improve the quality of data, INS will make checks in the received declarations. Moreover, since Intrastat data are compared to VAT/VIIES data, you may be contacted in case of large differences between these data. This implies that you must be able to document / support the information declared.

5 What should be declared and what not?

5.1 Intra-EU trade in goods to be declared for Intrastat system

Any **movement of goods** from a Member State to Romania (**arrivals**) or from Romania to a Member State (**dispatches**) has to be declared in Intrastat system (with a few exemptions as described in the next sub-section 5.2 “Transactions to be excluded from Intrastat” in the Handbook for Intrastat Data Providers-Part I and in Part II – Extended Handbook).

The statistics relating to trading of goods between Member States, i.e. Intrastat system shall **include**:

1. Dispatches of following goods that left the Romanian territory for another Member State:

(a) The Community goods, except goods which are in simple circulation on Romanian territory:

The Community goods are considered to be:

- (i) goods entirely obtained in the customs territory of the European Community, without addition of goods from third countries or territories which are not part of the customs territory of the European Community;
- (ii) goods from third countries or territories which are not part of the customs territory of the European Community, which have been released for free circulation in Member States;
- (iii) goods obtained in the customs territory of the European Community either from the goods referred to exclusively in point (ii) or from the goods referred to in points (i) and (ii).

(b) Goods placed in Romania under the inward processing customs procedure or the processing under customs control procedure.

2. Arrivals of following goods entering in Romania from another Member State:

(a) Community goods, except goods which are in simple circulation on Romanian territory;

(b) Goods formerly placed in the Member State of dispatch according to inward processing customs procedure or processing according to customs control procedure, which are maintained according to inward processing customs procedure or the processing according to customs control procedure or released for free circulation.

Statistics relating to trading of goods between Member States, respectively Intrastat system, **don't include**:

1) Goods dispatched or arrived in Romania from territories which are not a part of Community fiscal territories. The territories which are not a part of Community fiscal territory are presented into the **Annex 2**. The exchange of goods with these territories which are not part of Community fiscal territory but belong to Community customs territories must be accompanied by the import/export customs declarations.

2) Goods dispatched or arrived in Romania to/from other EU Member States accompanied by the import/export customs declarations.

These materials are provided only for information. It is not an official translation!

Information from the import/export customs declarations are provided, monthly, to INS by National Agency of Fiscal Administration. Including this information in Intrastat declaration also, represents a double registration of transactions in Intrastat system.

Operations that are subject to reporting it's not necessarily to have commercial character. The PSI shall provide information regardless of whether the delivery of goods is related with monetary transaction or not.

Return of goods and dispatch/arrival of goods that replace them. This means, that the goods arrived from another Member State into Romania due to return of goods originally dispatched from Romania or goods arrived to Romania as a replacement for originally arrived goods shall be reported on principle into Intrastat declaration intended for arrival of goods. On the other hand, goods returned from Romania to another Member State or dispatched to another Member State as a replacement for goods dispatched there originally shall always be reported into Intrastat declarations for dispatch of goods. *(For further details, please see Handbook for Intrastat data providers – part II –Extended Handbook chapter 2. Codification of Nature of Transaction – 2.2 Transaction Code 2)*

In practice, this means that an Intrastat declaration has to be prepared for the flow of incoming goods (arrivals) or the flow of outgoing goods (dispatches) for the following transactions:

- purchased or sold goods;
- goods intended for processing under contract (processing);
- goods returned after processing under contract, i.e. after processing operations are completed;
- goods received, shipped and exceptionally returned as a part of financial leasing;
- goods dispatched and arrived as a part of claims of unsatisfactory performance of purchase contract, including return of defective goods, and goods dispatched and arrived as a replacement defective goods under complaint;
- goods delivered for free (e.g. donations), if it is not the case of commercial samples free of charge or advertising material and other goods exempted from reporting;
- goods supplied as a part of building and construction works;
- goods supplied as a part of a service, if VAT is applied to the goods as goods acquired from or supplied to another Member State;
- goods received or shipped as part of deliveries to central and distribution warehouses;
- goods shipped or received into consignment stock;
- goods received or dispatched for storage, if the storage time is supposed to exceeds two years and the goods are supposed to be returned to owner afterwards;

These materials are provided only for information. It is not an official translation!

- goods received or dispatched for temporary use, if the supposed time is longer than 24 months (e.g. goods borrowed for free for a period of time exceeding 2 years or goods for operational leasing longer than 2 years).

Subject matter of reporting for Intrastat is also regular deliveries of newspapers, magazines and similar periodicals, even though they are paid for in the form of subscription fee. In Intrastat declaration will be introductions of such goods only in the month in which they were **physically received**. Dispatch of the subscribed periodicals will always be reported for the reference period in which they were **physically dispatched** to the customer.

5.2 Transactions to be excluded from Intrastat

The movements of goods that should be excluded from Intrastat are:

- Services
- Goods in transit

Goods in simple circulation between Member States (i.e. transit) are goods dispatched from one Member State to another, which, on the way to Member State of destination, travel directly through Romania or stop here for reasons related only to transport of goods. Repacking or storing of goods is usually not considered as stops related only to transport of goods.

- Temporary movements

That includes goods which are temporarily exchanged over less than 2 years, provided that they are not subject to further processing and that the dispatch or receipt are not to be declared for VAT purposes in VAT and in the recapitulative declarations regarding dispatches /arrivals of goods (VIES). This applies to, e.g. goods intended for exchange of goods fairs and exhibitions, machines for construction, means of transport.

- Goods delivered as commercial samples, advertising material and articles, for free.
- Exchange of goods with those parts of certain Member States which do not belong to scope of Intrastat (*see Annex 2*).
- Repairs (goods dispatched / brought from / to Romania to /from EU Member State for repair and goods brought / sent to / from Romania after repair and replacement parts that are built into repair) (for more information regarding repairs, *see section 5.1 “General basis” of Handbook for providers of Intrastat statistical information – part II – Extended Handbook*).
- Goods dispatched to or arrived from territorial enclaves. Usually, the economic territory of a country includes any territorial enclave (embassies, foreign military camp and other similar emplacements) located physically between the national frontiers of another country and excludes other country enclaves located between its own national frontiers. Consequently, movement of goods between a Member State and its territorial enclaves established in other Member States is an internal flow and must be excluded from dispatches and arrivals by the reporting Member State. Such

These materials are provided only for information. It is not an official translation!

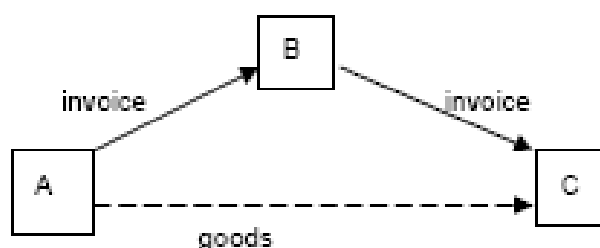
movements of goods must be excluded from trade statistics of host Member State (the Member State which includes inside its national frontiers the enclaves of other Member States).

Further movements of goods from territorial enclaves to host Member State must be recorded at the moment of movement as arrivals of host Member State and dispatches of state which territorial enclaves belong.

- Triangular exchange of goods, where goods are not entering the territory of Romania from another Member State or they are not moving to another Member State from Romania (Romania is intermediary).

The term *triangular exchange of goods* is used in the following situation:

There are three economic operators A, B, and C with offices in different Member States of European Union. Economic operator A sells goods to economic operator B, which, in turn, sells them to economic operator C. The goods are dispatched directly from A to C.



For INTRASTAT statistics, economic operators A and C must declare a movement of goods in their respective countries. For B, this commercial operation does not have to be declared, as there was no movement of goods in its country.

Note: there are several possible variants for this basic diagram presented above. The Handbook for Intrastat Data Providers - Part II-Extended Handbook contains detailed account of triangular exchange of goods, illustrated with special cases and examples.

6 Data to be provided in the Intrastat declaration

6.1 Basic Information

All Providers of Statistical Information must transmit all information required by the Intrastat declaration. The only exemption is the “statistical value” which has to be provided only by those economic operators whose total arrivals are above 10,000,000 lei or/and total dispatches are above 20,000,000 lei.

The data needed in Intrastat declaration, refers to:

- PSIs identification details
- Identification information for third party (if there is any)
- Identification code trade partner of PSI - It is specified the tax identification code of EU trading partner to whom the goods are physically sent. This field will be filled only for dispatches
- Reference period
- Flow of goods (arrivals/dispatches)
- Type of declaration (new, revised, null)
- Commodity code (CN8) - description of commodity
- Code of country of consignment - in case of arrival INTRASTAT declaration or Code of country of destination - in case of dispatch INTRASTAT declaration
- Code of country of origin – both for INTRASTAT declarations in case of “Arrivals” and those of “Dispatches” declarations
- Net mass (kg)
- Quantity in supplementary measure units (if necessary)
- Invoiced value (lei)
- Statistical value (lei)
- Nature of transaction code
- Mode of transport code
- Terms of delivery code

More details on codes used for certain boxes are provided in the next sections.

6.2 Information to be provided at declaration level

6.2.1 PSI, identification code trade partner of PSI and third party declarant – identification details

If using the Intrastat on-line application the details of declarant appear in the screen automatically since the fiscal code (CIF) is used to identify the declarant. If you need to change something in the details of your economic operator, this can be requested by

These materials are provided only for information. It is not an official translation!

filling up the appropriate Questionnaire in the application menu – section “Edit Firm Details” (since changes in economic operators demographic data must be approved by INS according to some specific rules). The only change that can be allowed by the system without approval of INS is related to the information of contact person. In the case of third party declarants, the details of both the economic operator and the third party will appear on the screen.

However, the declarant must notify INS of any change that occurs in its identification data. Informing will be done in written and send it to INS by fax (021.318.18.58, 021.311.50.42) or e-mail (intrareg@insse.ro).

Identification data of the economic operator- PSI:

- economic operator VAT number (10 digits) –unique tax identification code (CUI)
- the economic operator's name
- the full address
- contact person (person who is responsible for information from the declaration)
- telephone number
- fax number
- E-mail address

Identification code trade partner of PSI

The tax identification code is unique code assigned by the Territorial Tax Administrations, to the legal persons, associations and individuals familiar with commercial activity.

In this field is specified the tax identification code of the EU trade partner to whom the goods are physically dispatched. This field will be filled only for dispatches.

For establishing the treatment of each transaction in international trade statistics, is applied the principle that aims the physical flow of goods across national borders and no the tax documents circuit.

Therefore, in the Tax code field of EU trading partner in the Intrastat declaration will be specified the trader who receives the goods in the Member State where they are physically dispatched (based on transport documents or other relevant documents).

If there is a **declaring third party** it should be also declared:

- the identification data of the declaring third party
- VAT registration number (10 characters) (unique tax identification code - CUI)
- name of third party declarant, etc.

Note: Using the off-line or the on-line tools for providing Intrastat declaration, the economic operator will fill in the identification data only first time, then there is no need to repeat these every month. Once entered the identification data they are preserved for future declarations as well.

These materials are provided only for information. It is not an official translation!

6.2.2 Reference period

Month and year: these correspond to reference period for which you submit /revise an Intrastat declaration.

6.2.3 Flow: Arrivals / Dispatches

Each economic operator must submit separate declaration for arrivals and dispatches respectively; it will be selected the flow for which the economic operator declares information.

6.2.4 Type of declaration

There are 3 types of declarations. These are:

- the NEW declaration which means the declaration for a specific month and flow that has not been submitted (is to be transmitted first time for a given reference month and flow),
- the REVISED declaration, which implies that the economic operator wants to change / correct / add / delete some of entries of an existing declaration, already sent to INS.
- the NULL declaration, which means that the economic operator does not have any Intra-EU transaction during the reference period but it submits a null declaration so as not to be considered as non-response and receive a fine. This it tells INS that the economic operator has not forgotten to submit the declaration.

6.3 Information to be provided at commodity level

6.3.1 Commodity Code: Combined Nomenclature 8-digits code

For identification of goods which are object of Intra-EU trade it must be used the code at 8-digit level from Combined Nomenclature (CN), which is the base of Community Customs Tariff.

The searching procedure and selection of codes that refers to goods is facilitated by IT applications that INS provides to PSIs. Note that an economic operator does not need to enter its description as it appears automatically when a commodity code is selected. However, it would be useful to check if the description coincides with the product to be declared.

Provider of statistical information has the obligation to make a correct report of goods and selection of code at 8-digit level from CN properly for Intra-EU trade of goods. The additional information regarding 8-digit commodity codes that there is in different documents must be verified rigorously and if it proves that these are incorrectly or inexactly they will be ignored from completing procedure of Intrastat declaration and replaced with correct information, according with goods that are object of Intra-EU trade.

The detailed description of all valid codes for the reference year can be found on www.intrastat.ro (on-line application) as well as in Intrastat off-line application. A detailed description of these codes is presented in CN_2017.pdf from directory

These materials are provided only for information. It is not an official translation!

“Documentation” from Intrastat off-line application and in section “Intrastat Declaration”, on website www.intrastat.ro, also.

6.3.2 Country of destination / expedition / origin

For **dispatches**, the code of Member State of **destination** of goods must be declared.

For **arrivals**, the code of Member State of **expedition** of goods must be declared, respectively the Member State from which the goods were dispatched to Romania and also the country of origin of product which can be any country in the world. Note that the country of origin can be outside EU. The codes for all countries (EU member states and third countries) are provided in **Annex 1**.

Exclusions:

The trade of goods with certain parts of territories of European Union Member States is not part of Intrastat statistical system, because they **don't belong to statistical territory of European Union**, they being subject to customs declarations, which National Institute of Statistics taking them over from National Agency of Fiscal Administration. The above said territories are as follows: Büsingen (CH), Campione d'Italia (CH), San Marino (SM), Gibraltar (GI), Ceuta (XC), Melilla (XL), Andorra (AD), Greenland (GL), Faroe Islands (FO) and the areas of Cyprus that are under control of Government.

The exchanges of goods with the following territories that belong to statistical territory of EU but **don't belong to fiscal territory of EU** must not be reported in Intrastat statistical declaration: Heligoland (DE), Monaco and French overseas Departments (French Guiana, Guadeloupe, Martinique and Réunion) and the French northern part of Saint Martin (FR), Åland Islands (FI), Mount Athos (GR), Channel Islands (GB), Livigno (IT), the territorial waters of Lugano (IT) and Canary Islands (ES). Customs declarations will still be drawn up for exchange of goods with these territories, the National Agency of Fiscal Administration supplying these data to National Institute of Statistics.

Member State of destination

In the case of dispatches, the Member State of destination is the Member State to which goods are dispatched by the reporting Member State, without - as far as it is known at the time of dispatch - being subject to any halts or legal operations which are not inherent in their transport.

If it is known at the time of dispatch that goods are to be delivered to a Member State 'A' but will first enter a third Member State 'B' where they are subject to any halts or legal operations which are not inherent in their transport, the Member State 'B' is the **Member State of destination** and Member State 'A' should not be reported as part of this transaction.

Member State of consignment

In the case of arrivals, the Member State of consignment is the Member State from which goods were dispatched to reporting Member State, without any halts or legal operations which are not inherent in their transport taking place in any intermediate Member State.

These materials are provided only for information. It is not an official translation!

If, before arriving in the reporting Member State, goods enter a third Member State and are subject to halts or operations not inherent in their transport, that third Member State should be taken as **the country of consignment**.

A *halt* is any temporary interruption of physical movement of goods before continuing the movement to final destination. A *legal operation* can be any commercial transaction or comparable operation having legal consequences (e.g. sale or processing under contract).

Halts or operations related to transport of goods include, for instance, a change of means of transport, preserving operations to keep the goods in good condition during transport, breaking-up and assembly of packages.

Goods in simple circulation in MS B



A halt NOT inherent in transport takes place in



A halt inherent in transport takes place in MS B



Country of origin

On arrivals, the country of origin means the country where the goods originate. This is collected for both the arrival and dispatch flow.

Goods whose production involved more than one country shall be deemed to originate in the country where they underwent their last, substantial, economically justified processing or working in a company equipped for that purpose, resulting in the manufacture of a new product or representing an important stage of manufacture.

The origin of goods can be changed only by processing or working; any other operations (e.g. sale/purchase, return of goods etc.) preserve the origin. Also using the

These materials are provided only for information. It is not an official translation!

goods in a country for many years do not change their origin, even if their commodity code might change (e.g. used cars).

6.3.3 Net mass in whole kg

Net mass represents the actual mass of goods excluding any packaging (boxes, pallets, containers, bottles etc.).

The term “packaging” means materials and components used in any packaging operation to wrap, contain and protect articles or substances during transport.

The term “package” includes all articles used and, in particular, holders used as external or internal coverings for goods, holders on which goods are rolled, wound or attached, containers (other than those defined in international conventions) and receptacles. The term excludes means of transport and articles of transport equipment such as pallets and freight containers.

Example: A company purchase from an EU member state 1 000 bottles of wine. Each bottle of wine weighs 1.25 kg and the wine in each bottle weighs 0.75 kg. In the box “Net mass” of Intrastat declaration must be reported $1000 \times 0.75 = 750$ (kilograms - kg).

Net mass of dispatched goods shall be reported rounded up in entire kilograms for each line of the report separately. For goods with decimal fracture mass the general rules of rounding will be applied:

- if decimal part is lower than five, then it will be rounded at the whole lower number;
- if decimal part is higher than five or equal with five, then it will be rounded at the whole higher number;

Net mass lower than 1 kg shall be rounded as follow: figure 1 (1 kg) must be reported for quantities greater or equal with 0.5 kg or figure 0 for the quantities less than 0.5kg.

In case that there is more goods that are declared on different lines in Intrastat declaration for a certain reference period, certain flow, with the same commodity 8-digit code, the same Member State of destination/dispatch/origin, the same mode of transport, the same transaction code, the same INCOTERMS and net mass lower than 0,5, then the respective lines should be cumulated in order to not distort statistical results that are obtained by reporting large invoice / statistical value that are afferent with net masses equal with zero.

If the net mass is expressed in multiples or submultiples of kilogram, it must be converted into kilograms

6.3.4 Supplementary units

The supplementary units represent a measure unit, other than kilograms, in what a good may be expressed. **Not all commodities have supplementary units.** The item codes for which a supplementary unit is required are listed in CN for each corresponding 8-digit code that can be expressed in this kind of measure unit (**Annex 6**). In Intrastat statistical declaration, quantity in supplementary units corresponding to 8-digit code selected from CN is indicated in, e.g. number of items (p/st), litres (l), pairs (pa), square metres (m²), cubic metres (m³), MWh etc.

These materials are provided only for information. It is not an official translation!

Supplementary units are indicated without decimals. In case that quantity expressed in supplementary units is lower than 1 then it will be reported always digit 1. For the rest of cases it will be applied general rules of rounding that were presented at former section “Net mass”.

Declaring supplementary unit does not exempt from the obligation of declaring net mass in kg.

6.3.5 Invoiced value stated in LEI

For EU dispatches and arrivals, the invoiced value of goods delivered / received is stated in LEI, **without VAT or excises**.

Invoiced amount is the value of commodities indicated on the invoice, which might contain transport and insurance costs according to delivery terms **but not VAT or excises**. In the invoiced amount may be included incidental expenses if they represent payments paid by the buyer to seller and are simultaneously incorporated into the base for VAT. The incidental expenses may be the expenses related to packaging, transport, insurance or commissions.

The invoice value must always reflect the real value of goods. If the exchange of goods is not accompanied by a document attesting the real value of goods, the invoice value should be **estimated** from the amount that would have been charged for the purchase or sale of goods identical or similar, preferably under similar conditions (produced in the same country at the same time etc.) and if this is not possible we use the market value of goods.

Example

When dispatching goods the value of which alone is 100, and under **EXW** delivery term, where costs related to transport of goods are paid by the purchasers themselves, the invoiced value shall be 100, too.

With the same goods and **DDP** - place of consignee delivery term, where the direct business costs related to transport are 50, and the invoice shows total price of 150 (the seller logically increased the price of goods, 100, by the value of direct business costs spent by him, 50, which means that he included direct business costs into the price of goods) and the invoiced value will be 150.

With the same goods and **DDP**-place of consignee delivery term, where the direct business costs related to transport are 50, and where the invoice shows separately the price of goods amounting to 100 and direct business costs totaling 50, the invoiced value shall also be 150.

The abovementioned examples imply that it is not decisive whether the invoice shows the direct business costs separately (e.g. goods 100, direct business costs 50, total sum to be paid 150) or if it show the total aggregate sum 150. Likewise, under **DDP** delivery terms, the value of direct business costs would be included into the invoiced self-cost price 100 if such costs were charged separately (invoice 1 – goods for 100, invoice 2 – incidental expenses 50) and the invoiced value would be also 150, all of it on condition that the delivery term **DDP** place of consignee is met (transport was ensured and paid by the sender and was not considered in the VAT return as service supplied separately).

These materials are provided only for information. It is not an official translation!

Indication of the value when no invoice is issued

When goods are dispatched without an invoice or with a pro-forma invoice, the value is indicated at the market price of goods. If such price cannot be found, the exchange of goods value is used in accordance with the rules governing customs valuation.

Invoice value for processing of goods

For goods, which are exported / imported for processing, the total value which should have been invoiced in a purchase or a sale, as defined above, should be stated. When the goods are re-imported/re-exported following processing, the value indicated should be the value of goods upon exportation/importation plus the invoice charged for processing that it has been performed (labour).

For other transactions than sale, the value must be determined as if it was a sale and the declared value must be based on a calculation or estimate as in cases when invoice is not issued. May be cases, when PSI sends (transfers) its own property into another Member State for instance for the purpose of uncertain sale, for the storage in time exceeding 24 months or for the processing under contract.

If goods are dispatched after being processed under contract, the reported value must include the value of goods received for processing increased by value of processing operation (work executed on the goods) and by value of additions, if any, added to the processed (improved) goods by the processor. In such cases, the invoiced value is actually total value of the processed goods, i.e. value charged by the processor increased by value reported in Intrastat as value charged on the arrival of the goods for processing (before processing).

Warning: in some cases, the invoiced value recorded in fiscal documents may be different from the one filled in Intrastat statistical declaration (as the processing – value of goods after processing containing the value of raw materials and the price of manufacturing and the value of additional parts or materials in Intrastat, but on the fiscal document is recorded only the price of manufacturing).

In case of **dispatches of wastes**, if they are received / dispatched free of charge, two situations may occur:

1. wastes are not recyclable – in this case the invoice value in the Intrastat declaration is to be equal with 1;
2. wastes are recyclable later on, by their reselling or by entering into a production process (e.g. metallic, plastic wastes etc) – in this case their fiscal value must be estimated in the Intrastat declaration.

If the dispatched goods are returned to another Member State and do not represent processing of goods under contract in Romania, such **invoice value shall be entered in declaration that is identical with the value stated in the declaration on the arrival of goods in question**. The same rule shall apply to goods received for the purposes of **financial leasing**; if it is dispatched to their owner contrary to original assumption or the **returned goods for the purposes of complain their quality**.

When dispatching information media containing data or software for data processing equipment, a part of the invoiced value is the price of these data or software recorded on such media (the goods are coded as information medium category).

These materials are provided only for information. It is not an official translation!

If the dispatched Intrastat consignment contains several types of goods, the value of which is stated on one single invoice without breakdown by each goods, the invoice value of the respective line to be recorded in the Intrastat declaration shall be calculated by dividing the total value by each particular good or by estimating it for each type of good.

If the invoice is issued for several types of goods subdivided into various CN codes, where each subheading of goods is valued separately but the value of direct business costs related to transport of goods is expressed only as a total sum for all goods mentioned, the direct business costs must be divided pro rata to respective subdivisions of goods according to mutual proportion of their mass or quantity in supplementary unit, if the supplementary unit is the same for all types of goods shown in invoice. Unless mutual proportion of quantities of separate types of goods may be used, transport costs shall be divided according to mutual proportion of their values.

The invoiced value of goods shall be shown in the Intrastat declaration always in LEI rounded up without punctuation marks or decimal points.

Conversion into LEI

If the value is stated in a currency other than LEU, the value should be converted into LEI. Conversion must be based on the exchange rate established by National Bank of Romania at the time of:

- Dispatch – is recommended to use the date of expedition document or the date of actual dispatch.
- Arrival – is recommended to use the date of arrival from the international transport document (CMR, CIM, AWB, BOL), if this document is available, beings two possibilities, depending on the moment of actual reception of goods:
 - i) Date on international transport document is before the date of physical reception of good – in this case date on transport document is to be considered.
 - ii) Date on international transport document coincides with the physical reception of goods.

If the international transport document is not available (e. g. CMR, AWB etc), is recommended to use the date of physical reception of good at the consignee, this fact generate reception record of good /NIR in their own administration.

Payment by installments

If the commodity is paid in installments, it must be declared to Intrastat only once, with total value, at the moment when the commodity is delivered / entered from/in Romania.

Indication of where the invoice issued / received is given a discount

If in the invoice accompanying the goods is granted a discount and its value does not distort the value of goods, then in the Intrastat declaration must be indicated the value of goods after the application's discount. Otherwise, in the Intrastat declaration is reflected the real value of goods before granting discount.

These materials are provided only for information. It is not an official translation!

Rebates and discounts which are known at the moment of declaring goods to Intrastat and can be related to each delivery of concrete goods should be taken into account when defining the statistical value.

However, discounts/increases granted at a later point in time (e.g. not foreseeable at the time of transaction, granted as total amount for all previous transactions) and subsequent changes of the underlying contract do not require an adjustment of statistical value.

6.3.6 Statistical value

The statistical value is the value of a good at the place and the time when it leaves (in case of dispatches) or enter (in case of arrivals) the Romanian national territory (border of Romania).

In addition to value of good, the statistical value must include the cost of its transport and insurance until Romanian border (internal, respectively external route).

$$S_v = I_v \pm I_{fic}(E_{fic})$$

Where:

S_v – Statistical value

I_v – Invoiced value

I_{fic} (E_{fic}) – Internal (external) freight and insurance cost

The statistical value is derived from the invoiced amount adjusted based on the delivery terms. Generally, under reserve that *each transaction has own particularities*, it could be said that the correlation between the invoiced and statistical values are those presented in the **Table 1** for dispatches and **Table 2** for arrivals below:

These materials are provided only for information. It is not an official translation!

Table 1

| FLOW: DISPATCHES OF GOODS | | | |
|--|--|--|-------------------------------|
| Delivery terms | Invoiced value (Iv) | Statistical value (Sv) | Correlation |
| EXW Ex Works | <i>For all modes of transport</i> <i>EXW invoiced value</i> - value at factory premises - | <i>EXW invoiced value</i> + internal freight & insurance costs, respectively from the place of delivery to the border of Romania | $Sv > Iv$ $Sv = Iv + Ific$ |
| FCA Free Carrier | <i>For all modes of transport</i> <i>FCA invoiced value</i> - includes, in addition to the value of goods, freight costs to the carrier - | <i>FCA invoiced value</i> + internal freight & insurance costs, respectively from the place of delivery to the border of Romania | $Sv > Iv$ $Sv = Iv + Ific$ |
| FAS Free alongside ship | <i>Only for shipping and inland waterways</i> <i>FAS invoiced value</i> - includes, in addition to the value of goods, freight costs to the ship, outside it - | <i>FAS invoiced value</i> + expenditure for loading in order to pass over the border – balustrade / quay level | $Sv > Iv$ $Sv = Iv + Ific$ |
| FOB Free on board | <i>Only for shipping and inland waterways</i> <i>FOB invoiced value</i> - includes, in addition to the value of goods, all costs until warehousing of good on the boat are assured - | <i>FOB invoiced value</i> | $Sv = Iv$ |
| CFR Cost and freight | <i>Only for shipping and inland waterways</i> <i>CFR invoiced value</i> - includes, in addition to the value of goods, the freight costs to the port of destination; does not include the insurance costs - | <i>CFR invoiced value</i> - external freight & insurance costs, respectively at the border of Romania to the port of destination | $Sv < Iv$ $Sv = Iv - Efic$ |
| CIF Cost, insurance and freight | <i>Only for shipping and inland waterways</i> <i>CIF invoiced value</i> - includes, in addition to the value of goods, the freight & insurance costs to the port of destination - | <i>CIF invoiced value</i> – external freight costs, respectively at the border of Romania to the port of destination | $Sv < Iv$ $Sv = Iv - Efic$ |
| CPT Carriage paid to agreed destination | <i>For all modes of transport</i> <i>CPT invoiced value</i> - includes, in addition to the value of goods, all costs to the place of destination; does not include the insurance costs - | <i>CPT invoiced value</i> – external freight costs, respectively at the border of Romania to the place of destination | $Sv < Iv$ $Sv = Iv - Efic$ |

These materials are provided only for information. It is not an official translation!

| FLOW: DISPATCHES OF GOODS | | | |
|--|---|--|-------------------------------------|
| Delivery terms | Invoiced value (Iv) | Statistical value (Sv) | Correlation |
| CIP Carriage and insurance paid to agreed destination | <i>For all modes of transport</i> <i>CIP invoiced value</i> - includes, in addition to the value of goods, all costs incurred by freight & insurance to the importer gate - | <i>CIP invoiced value</i> - external freight costs, respectively at the border of Romania to the place of destination | $Sv < Iv$ $Sv = Iv - E_{fic}$ |
| DAT Delivered at terminal | <i>For all modes of transport</i> <i>DAT invoiced value</i> - includes, in addition to the value of goods, all freight costs to the agreed terminal of destination - | <i>DAT invoiced value</i> - external freight cost and insurance, respectively at the border of Romania to the agreed terminal of destination | $Sv < Iv$ $Sv = Iv - E_{fic}$ |
| DAP Delivered at place | <i>For all modes of transport</i> <i>DAP invoiced value</i> - includes, in addition to the value of goods, all freight costs to the agreed place of destination- | <i>DAP invoiced value</i> - external freight & insurance costs, respectively at the border of Romania to the agreed place of destination | $SV \leq Iv$ $Sv = Iv - E_{fic}$ |
| DDP Delivered duty paid* | <i>For all modes of transport</i> <i>DDP invoiced value</i> - value of goods arrived to buyer, with duty paid | <i>DDP invoiced value</i> – external freight & insurance fees and costs | $SV < Iv$ $Sv = Iv - E_{fic}$ |

* For Intra-EU trade in goods, the customs duties are non-existent

These materials are provided only for information. It is not an official translation!

Table 2

| ARRIVALS OF GOODS | | | |
|--|--|--|------------------------------------|
| Delivery terms | Invoiced value (Iv) | Statistical value (Sv) | Correlation |
| EXW Ex Works | <i>For all modes of transport</i> <i>EXW invoiced value</i> - value at factory premises- | <i>EXW invoiced value</i> + external freight & insurance costs, respectively from the place of delivery to the border of Romania | $Sv > Iv$ $Sv = Iv + E_{fic}$ |
| FCA Free Carrier | <i>For all modes of transport</i> <i>FCA invoiced value</i> - includes, in addition to the value of goods, the freight costs to the carrier- | <i>FCA invoiced value</i> + external transport & insurance costs, respectively to the place of delivery at the border of Romania | $Sv > Iv$ $Sv = Iv + E_{fic}$ |
| FAS Free alongside ship | <i>Only for shipping and inland waterways</i> <i>FAS invoiced value</i> - includes, in addition to the value of goods, freight costs to the ship, outside it | <i>FAS invoiced value</i> + loading costs in order to pass over the border - balustrade/quay level including the cost to the port of destination | $Sv > Iv$ $Sv = Iv + E_{fic}$ |
| FOB Free on board | <i>Only for shipping and inland waterways</i> <i>FOB invoiced value</i> - includes, in addition to the value of goods, all costs until warehousing of good on the boat are assured - | <i>FOB Value</i> + freight and insurance costs to the port of destination | $Sv > Iv$ / $Sv = Iv + E_{fic}$ |
| CFR Cost and freight | <i>Only for shipping and inland waterways</i> <i>CFR invoiced value</i> - includes, in addition to the value of goods, the freight costs to the place of destination; does not include insurance costs- | <i>CFR invoiced value</i> | $Sv = Iv$ |
| CIF Cost, insurance and freight | <i>Only for shipping and inland waterways</i> <i>CIF invoiced value</i> - includes, in addition to the value of goods, freight & insurance (paid by seller) costs to the port of destination - | <i>CIF invoiced value</i> | $Sv = Iv$ |
| CPT Carriage paid to | <i>For all modes of transport</i> <i>CPT invoiced value</i> | <i>CPT invoiced value</i> - internal freight costs, respectively at the border of Romania to the place of | $Sv < Iv$ $Sv = Iv - I_{fic}$ |

These materials are provided only for information. It is not an official translation!

| ARRIVALS OF GOODS | | | |
|--|---|--|--|
| Delivery terms | Invoiced value (Iv) | Statistical value (Sv) | Correlation |
| agreed destination | -includes, in addition to the value of goods, costs, except the insurance, to the place of destination - | destination | |
| CIP Carriage and insurance paid to agreed destination | <i>For all modes of transport</i> <i>CIP invoiced value</i> -includes, in addition to the value of goods, all freight & insurance costs to the place of destination - | <i>CIP invoiced value</i> - internal freight costs, respectively at the border of Romania to the place of destination | $Sv < Iv$ $Sv = Iv - If_{ic}$ |
| DAT Delivered at terminal | <i>For all modes of transport</i> <i>DAT invoiced value</i> - includes, in addition to the value of goods, all freight costs to the agreed terminal of destination - | <i>DAT invoiced value</i> - internal freight costs, respectively at the border of Romania to the agreed terminal of destination | $Sv = Iv(\text{water}) /$ $Sv < Iv$ (all) |
| DAP Delivered at place | <i>For all modes of transport</i> <i>DAP invoiced value</i> - includes, in addition to the value of goods, all freight costs to the agreed place of destination | <i>DAP invoiced value</i> - internal freight & insurance costs, respectively at the border of Romania to the agreed place of destination | $Sv < Iv$ $Sv = Iv - If_{ic}$ |
| DDP Delivered duty paid** | <i>For all modes of transport</i> <i>DDP invoiced value</i> -value of goods arrived to buyer, with duty paid | <i>DDP invoiced value</i> - internal freight & insurance fees and costs | $Sv < Iv$ $Sv = Iv - If_{ic}$ |

* For Intra-EU trade in goods, the customs duties are non-existent

These materials are provided only for information. It is not an official translation!

Example

In case of dispatches:

- If a Romanian economic operator is selling its goods to France using delivery terms **EXW**, it should add the costs of transport until the Romanian border to the invoiced amount when calculating the statistical value.
- If a Romanian economic operator is selling its goods to France using delivery term **DDP**, which means that the economic operator is delivering the goods to the customer at its own cost, the statistical value should be calculated by subtracting the transport costs **outside Romania** of the invoiced amount.
- If a Romanian economic operator is selling its goods to France using delivery term **CPT**, which means that the economic operator is delivering the goods to the customer at its own cost, the statistical value should be calculated by subtracting the transport costs **outside Romania** of the invoiced amount.
- If a Romanian economic operator is selling its goods to France using delivery term **FCA**, which means that the economic operator is delivering the goods to the customer at its own cost to the carrier, the statistical value should be calculated by adding of the invoiced amount of the transport costs **inside Romania**, from the carrier to the Romanian border.

In case of arrivals:

- If a Romanian economic operator is purchasing goods from France using delivery terms **EXW**, the invoiced amount should not contain transport costs. Statistical value should be calculated, by adding the costs of transport outside Romania to the invoiced amount.
- If a delivery term **DDP** is used in the same contract, which means that the seller is delivering the goods to the economic operator and the invoice is containing the transport costs also, statistical value should be calculated by subtracting the amount charged from the cost of transport on Romania territory.
- If a delivery term **CPT** is used in the same contract, which means that the seller is delivering the goods to the economic operator and the invoice is containing also the transport costs, statistical value should be calculated by subtracting the amount charged from the cost of transport on Romania territory.
- If a Romanian economic operator is purchasing goods from France using delivery terms **FCA**, the invoiced amount should contain transport costs to the carrier. Statistical value should be calculated, by adding to the invoiced amount the costs of transport outside Romania, from the carrier to the border of Romania.

If there is no invoice, the statistical value should be estimated as market value of goods at the Romanian border.

It is important to include in the Intrastat declaration all the goods arrived or dispatched, as for example:

These materials are provided only for information. It is not an official translation!

- In the case of free of charge dispatch, processing or returns, the value of goods is not always known. The reported value will be an estimated value of these goods.
- In the case of movement of goods “after processing”, declared value should include the initial value + manufacturing value;
- In the case of financial leasing, total value of goods in the moment of crossing the Romanian border should be declared for Intrastat.

If the dispatch or arrival take place somewhere, very closed to the national border (around 50 km), the statistical value could be declared as equal with the invoice value of respective goods.

Statistical value should be declared in LEI, without decimals.

6.3.7 Nature of transaction

Nature of transaction means all the features that make a difference between one transaction and another, particularly concerning a change in ownership of dispatched / arrived goods, receiving compensation for it, purpose of its dispatch / arrival (e.g. for processing according to a contract or after such processing) and so on. In Annex 3 and also, in *Part II-Extended Handbook* – chapter 2 “Codification of Nature of Transaction” is presented more detailed the codification of nature of transaction.

The codes are used for determining various characteristics (purchase / sale, work under contract, etc.) which are considered useful to distinguish between transactions, for the Balance of Payments and National Accounts or to identify information to be excluded from Intra-EU trade statistics.

Example 1

Processing, when the final product is returned to Member State where the materials was originally sent

An economic operator in Romania sent for processing materials in Bulgaria following the final product obtained from processing to be returned in Romania.

In this example, it is assumed that for the Intrastat system, the economic operator in Romania has the obligation to declare both dispatches and arrivals of goods. Materials are declared by the economic operator in Romania like dispatches of goods for processing, the nature of transaction is **4.1** (“Goods expected to return to the initial Member State of dispatch”). The final product will be declared like arrivals of goods after processing, the nature of transaction **5.1** (“Goods returning to the initial Member State of dispatch”).

Example 2

Processing, when the final product is not returned to the Member State where the materials was originally sent

An economic operator in Germany sent for processing materials in Romania following the final product obtained from processing to be delivered in United Kingdom.

In this example, it is assumed that for the Intrastat system, the economic operator in Romania has the obligation to declare both dispatches and arrivals of goods. Materials are declared by the economic operator in Romania like arrivals of goods for

These materials are provided only for information. It is not an official translation!

processing, the nature of the transaction is **4.2** (“Goods not expected to return to the initial Member State of dispatch”). The final product will be declared like dispatches of goods after processing, the nature of transaction **5.2** (“Goods not returning to the initial Member State of dispatch”).

6.3.8 Mode of Transport

The mode of transport determines the shipment method for goods. When a product has used more than one modes of transportation (e.g. train and ship) declare the one that was used to enter / leave the country.

The available codes can be found in **Annex 4**.

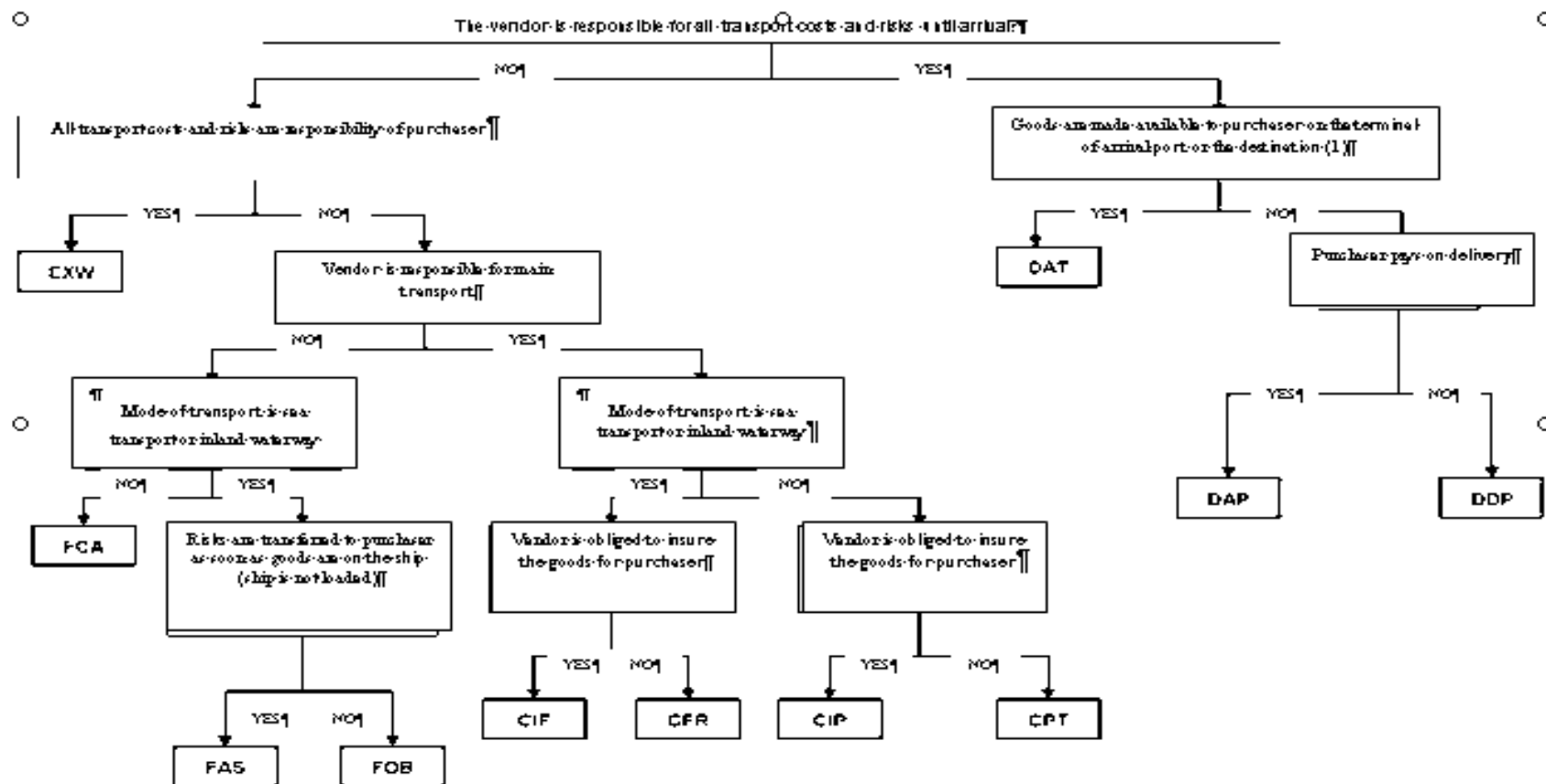
6.3.9 Delivery Terms

Delivery terms refer to accepted commercial terms defining the respective roles of buyer and seller in the arrangement of transportation and other responsibilities and clarify when the ownership of merchandise takes place. These terms are used in accordance with a sale agreement or other method of transacting the sale. Delivery terms are used by statistics to see if the value in Invoiced amount field contains costs of transports and insurance or not.

The available codes and definitions used for delivery terms can be found in **Annex 5** and are in accordance with the INCOTERMS delivery terms established by the International Chamber of Commerce.

The figure is suggestive to determine the delivery terms.

These materials are provided only for information. It is not an official translation!



(1) A "terminal" is: a quay, a warehouse, a container site, a train terminal, an air cargo terminal.

Figure 1: A flow chart to find the terms of delivery applicable starting with 1st January 2011, under INCOTERMS

6.4 Revisions of data

6.4.1 Revision Declaration before Submitting

Before submitting the declaration to INS, one or more data can be revised and being possible by adding, deleting and modified the data.

6.4.2 Revision Declaration after Submitting to INS

The revision of data, given in the declaration that **has been submitted** to INS can be done correcting it and resending it to INS, marked as **“Revised”**. The declaration containing revised data must be sent to INS as soon as possible after the fact is established that the submitted previous declaration contains wrong or inaccurate data.

When INS finds out errors in their sent declarations, the PSIs are obliged to analyze and correct data immediately and to **resent the correct revised declaration no later than 2 working days after the INS informed about the errors found**.

The revision of inaccurate or wrong data, given in the Intrastat declaration already submitted to INS shall be done by changing the data or cancelling them in the wrong declaration already submitted. The revised declaration shall be sent to INS under the same mark (name) as the original declaration, and that will be **replaced** with the revised declaration automatically. It is also possible to cancel all the presented data and to send a NIL declaration as the revised declaration, without data on goods. **Adding data** lacking in a Intrastat declaration already submitted to INS is possible just by adding them in the declarations previously sent to INS for a given reference month.

The errors regarding the commodity code and country code must be always corrected. For the rest of variables, the corrections should be submitted at transaction level for a reference month, in the following cases:

- the deviation (+/-) between the correct invoiced or statistical value and the reported invoiced or statistical value is **equal or more than 3000 lei**;
- the deviation (+/-) between the correct net mass/quantity in supplementary measure unit and the declared net mass/quantity in supplementary measure unit is **equal or more than 10%**.

For smaller differences (+/-) 3000 lei of fair value of goods and the value reported or/and for differences of less than 10% between the correct amount and the one declared in the Intrastat declaration, the economic operator it is not required to submit revised Intrastat declaration but **it is recommended** to do so in order to not exist significant differences between data reported for Intrastat system and those reported for VAT.

Data on dispatched or arrived goods shall not be revised subsequently in case when the whole shipment of goods or a part of it returns back within a warranty procedure (return arrival of originally dispatched goods or return dispatch of originally arrived goods that initially entered with transaction code **“1”** shall be mostly marked with transaction code **“2”**). Subsequently the data on goods shall not be revised for which the whole paid price has been returned by the seller after their arrival or dispatch within a warranty procedure, i.e. the full refund has occurred.

These materials are provided only for information. It is not an official translation!

It is not obligatory to revised Intrastat declaration data in the case when the nature of transaction initially declared is changed later on. For example, it may be the case of goods processed under contract which are not returned back or goods that have been stored for a period exceeding 24 months and not returned etc.

7 Where to find basic information?

In the previous chapters it has been described in detail all the information needed for the completion of Intrastat declaration. Initial data for completion of an Intrastat declaration are particularly data from the PSI's records on movement of stock and goods, and from its fiscal and accounting records.

There are three main sources of data:

1. Purchase and sales invoices, which provide information on:
 - the value of goods
 - the net mass, if applicable
 - the Member State of expedition / destination / origin
 - description of goods
2. Transport documents or delivery notes (necessary for proof of realized transaction) including:
 - mass net
 - supplementary units: number of items, pairs, meters etc. (according to list from Annex no. 6)
 - mode of transport (according to description from Annex no. 4)
3. Contracts or orders showing:
 - flow of goods (if is an arrival or a dispatch)
 - consignment and transport agreements
 - processing, repairs, etc.,
 - delivery terms (according to nomenclature from Annex no. 5).

8 Overview of the use of application for submitting declarations

8.1 Intrastat on-line application

The Intrastat statistical declaration may be completed and submitted on an electronic form on the Internet, at INS Intrastat service pages www.intrastat.ro. The Intrastat on-line application can be successfully used especially for information providers whose declaration comprises a relative small number of lines (declared goods).

The available Intrastat on-line application also includes a file uploading function for submitting a declaration file created with Intrastat off-line application. File uploading is well suited for declarants reporting a large number of sub-headings and whose statistical data can be obtained partly or wholly in electronic format from the economic operator's own data systems.

Other services from the Intrastat on-line application web system available to declarants are the following:

- View/modify/print a submitted declaration.
- View a history of declaration submissions.
- Request to update certain demographic data (address, telephone, and e-mail), main activity etc.
- Download a file with a declaration that has been previously submitted

To gain access to the available Intrastat on-line application web services, the declarant needs to register with the system. The registration is done via filling up a registration form in the above website. When registration is approved, a registration code and password will be forwarded to the user by e-mail. The absolute confidentiality of data recorded is assured. More details regarding registration procedures and facilities of the on-line application could be found by consulting the specific User guide on www.intrastat.ro.

8.2 Intrastat Off-line application

Intrastat off-line application for creating declarations is available on www.intrastat.ro and also could be distributed free of charge by INS upon a request. Using this application a declarant can fill the declaration, validate it, and create a declaration file (data may be encrypted). The generated declaration file (.xml or .enc format) must be sent to INS using one of the following ways:

- via e-mail in the following address declaratie.intrastat@insse.ro
- via function “upload declaration” available through Intrastat on-line application (www.intrastat.ro). This assumes registration with Intrastat web system.
- If the statistical information provider does not have access to Internet to submit Intrastat statistical declaration under paragraphs a) or b), will copy the file Intrastat declaration (file extension .xml or .enc) on a CD/USB and will contact the Territorial Statistical Department in whose area is his headquarters, asking

| |
|---|
| These materials are provided only for information. It is not an official translation! |
|---|

for the possibility to transmit by e-mail the file containing the Intrastat Statistical Declaration to National Institute of Statistics, central office or he will transmit the declaration from any other computer with Internet access, using option a) or b) presented above..

Additional functionalities offered by the off-line application are:

- Allow for various data validity checks;
- View historical data (i.e. previous submitted declarations);
- Handle versions of nomenclatures;
- Import of declarations.

Newer versions of application will be available in the future in order to improve the provided functionalities or in order to accommodate changes imposed by legislation, regulations etc. For this reason we strongly advice to visit the Intrastat web site often to check for possible updates of off-line application.

8.3 Predefined declaration file format

Declarations files created with the Intrastat off-line application have a certain predefined file format. This format is described in details in the “*Intrastat implementation guide for XML declaration file*” available on www.intrastat.ro, section “Intrastat Methodology“.

When the format is known, economic operators can use it and modify appropriately their existing software to produce the declaration files. When used in combination with the Intrastat off-line application, the declaration files can be imported, validated and saved in encrypted format.

This option is particularly suitable to declarants with a large number of transactions that use special application and thus they can adapt their software to produce the declarations in predefined format.

The created files must be sent using the procedure described in the previous paragraph.

8.4 Advantages of using the Intrastat web-service or the Intrastat Off-line application

The advantages of using the Intrastat Web service or the Intrastat off-line application are the following:

1. The system checks that the entered data is correct; it is for example impossible to submit incorrect codes.
2. Nomenclature CN8 is fully accessible.
3. No goods description is needed, the CN8 heading code is sufficient.
4. The speed for submitting the declaration is higher (for on-line application);
5. The completed declaration is sent directly to INS electronically, as it is stipulated in the legislation.

| |
|---|
| These materials are provided only for information. It is not an official translation! |
|---|

6. It is also possible to send a null declaration if there is no Intra-EU trade transactions performed in the reference period;
7. The declarations are saved in an archive, from which declarations may be accessed/used later.

These materials are provided only for information. It is not an official translation!

9 Help-desk

The Romanian National Institute of Statistics has set-up a helpdesk as a service to providers of statistical information on Intrastat. Staff from the helpdesk has the following tasks:

- Assisting FIS by providing methodological and practical information to complete and transmit Intrastat statistical information to INS.
- Give additional explanations on concepts and definitions that are used in Intrastat system
- Help treating complex transactions

So, for support concerning applied methodology in the statistical system PSI has at his disposal the Intrastat Helpdesk of INS. Helpdesk can be contacted as follows:

| | |
|--------------|--|
| Phone | + 004 021 317 77 20/21/22/23 |
| Fax | + 004 021 3181858, 021 311 50 42 |
| E-mail | intrastat@insse.ro |
| Post Address | Bdv. Libertatii nr. 16, sector 5, Bucharest |
| Internet | www.intrastat.ro |

If PSI contacts Intrastat Helpdesk by fax or e-mail, it is recommended to mention a phone number or an e-mail address where can be contacted later.

For questions regarding the submission of Intrastat statistical declaration (confirmation codes, failed uploads, etc.), please contact the Collection and primary control and Statistical Register Department of INS, by phone: **021/311.50. 14 / 19** or by e-mail: **declaratie.intrastat@insse.ro**.

For questions regarding the registration in the Intrastat statistical system (the change of address, receive the password, change the password, etc.), please contact the Statistical Register Department of INS by phone: **021.311.51.02** or by e-mail: **intrareg@insse.ro**.

10 Legal basis and penalties

10.1 European Legislation

Eurostat is responsible for harmonizing Community legislation in the field of statistics on trading in goods and ensuring that the legislation is applied correctly. The statistics to be provided to Eurostat are therefore based on precise legal texts, directly applicable in all Member States, and on definitions and procedures which have been largely harmonized.

Under the legislation, Member States of European Union are required to compile international trade statistics. The European Union has published various regulations on this subject, which are mandatory for the member states. These regulations also describe the rules for compiling these statistics and oblige economic operators in various MS to submit the necessary data to competent national authorities.

The main Community regulations concerning Intrastat are:

- Regulation (EC) No. **638/2004** of the European Parliament and of the Council of March 31, 2004 on statistics relating to the trading of goods between Member States and repealing Council Regulation (EEC) No. 3330/91 (OJ L 102, 7.04.2004).

amended by:

- Regulation (EC) No. **222/2009** of the European Parliament and of the Council of 11 March 2009 amending Regulation (EC) No. 638/2004 on Community statistics relating to the trading of goods between Member States, published in the Official Journal of the European Union No. L87 of 31 March 2009.
- Regulation (EC) No. **659/2014** of the European Parliament and of the Council of 15 May 2014 amending Regulation (EC) No. 638/2004 on Community relating to trading of goods between Member States as regards conferring delegated and implementing powers on the Commission for the adoption of certain measures, the communication of information by the customs administration, the exchange of confidential data between Member States and the definition of statistical value
- Commission Regulation (EC) No. **1982/2004** of 18 November 2004 implementing Regulation (EC) No. 638/2004 of the European Parliament and of the Council on Community statistics relating to the trading of goods between Member States and repealing Commission Regulations (EC) No 1901/2000 and (EEC) No. 3590/92 (OJ L 343, 19.11.2004)

amended by:

- Commission Regulation (EC) No **1915/2005** of 24 November 2005 amending Regulation (EC) No 1982/2004 with regard to the simplification of the recording of the quantity and specifications on particular movements of goods (OJ L 307, 25.11.2005).
- Commission Regulation (EC) No **91/2010** of 2 February 2010 amending Regulation (EC) No 1982/2004 with regard to the establishment of implementing provisions of Regulation (EC) No. 638/2004 of the European

These materials are provided only for information. It is not an official translation!

Parliament and of the Council on Community statistics relating to the trading of goods between Member States, on the list of goods to be excluded from statistics relating to the trading of goods between Member States, provision on information by fiscal administration and quality assessment.

- Commission Regulation (EC) No. **96/2010** of 4 February 2010 amending Regulation (EC) No 1982/2004 with regard to the implementing provisions of Regulation (EC) No. 638/2004 of the European Parliament and of the Council on Community statistics relating to the trading of goods between Member States, on the threshold simplification, trade by business characteristics, specific goods and movements and codes of nature of transaction.
- Regulation (EC) No. **1093/2013** amending Regulation (EC) No 638/2004 of the European Parliament and of the Council and Commission Regulation (EC) No 1982/2004 as regards the simplification within the Intrastat system and the collection of Intrastat information.
- Commission Regulation (EU) No 1106/2012 of 27 November 2012 implementing Regulation (EC) No 471/2009 of the European Parliament and of the Council on Community statistics relating to external trade with non-member countries, as regards the update of the nomenclature of countries and territories.

10.2 National legislation

National authorities of the Member States are obliged to operate the Intrastat system according to the highest level Community legislation (regulations). This statistical system works in all Member States but specific conditions for the application of Community legislation and establishing the obligations of economic operators is Member States task and it is established by national legal framework.

Thus, the obligation to declare and to submit the information requested in the Intrastat forms arises from EU regulations and from special national regulations as well.

More particularly, Intrastat in Romania is based on the **Law 422/2006** concerning the organization and activity of the statistical system of international trade in goods.

This law regulates the legal framework for the organization and activity of the statistical system of international (Intrastat as well as Extrastat), with the aim of producing statistics on trading of goods between Romania and the other EU Member States, and the trading between Romania and non-EU Member States.

Relative **Romanian and European legislation** is available at <http://www.insse.ro> and www.intrastat.ro, section “Legislation”.

10.3 Penalties

As we have previously discussed the obligation to provide Intrastat information is provided in European legislation. According to EC Regulation 638/2004 (Article 7), refusal of any party responsible for providing information to fulfill his/her obligations under this Regulation is under the law and Member States may impose fines established national. Penalties are imposed where Intrastat declarations are persistently late, missing, inaccurate or incomplete.

These materials are provided only for information. It is not an official translation!

According to Romanian Law no. 422/2006 the following acts are contraventions committed by the providers of Intrastat statistical information:

- refusal to submit the statistical data requested;
- delays in data submission;
- communication of incorrect or incomplete data;
- refusal to provide the persons authorized by the executive management of National Institute of Statistics with the documents and records necessary for checking statistical data;
- non-enforcement of the measures set out by National Institute of Statistics in notices and reports ascertaining the contravention.

The contraventions provided above are applied to legal persons and are punished with a fine between lei 7,500 and lei 15,000.

The ascertainment of contraventions described above and the enforcement of sanctions are the task of staff empowered to do this by Order of the President of National Institute of Statistics.

Please be aware that the payment of penalty does not exempt the economic operator from the obligation of submitting the report for the periods covered by the penalty!

However, penalties are seen as a last resort in the collection of data from Intrastat operators. We can provide help on the completion of Intrastat declarations by Intrastat Help-desk service.

These materials are provided only for information. It is not an official translation!

Annexes

These materials are provided only for information. It is not an official translation!

Annex 1. Codes of countries and territories

Table 1.1

| LIST OF THE EU MEMBER STATES | | | | | |
|------------------------------|----|-------------|----|----------------|----|
| Austria | AT | Greece | GR | Portugal | PT |
| Belgium | BE | Hungary | HU | Romania | RO |
| Bulgaria | BG | Ireland | IE | Slovakia | SK |
| Cyprus | CY | Italia | IT | Slovenia | SI |
| Czech Republic | CZ | Latvia | LV | Spain | ES |
| Denmark | DK | Lithuania | LT | Sweden | SE |
| Estonia | EE | Luxembourg | LU | United Kingdom | GB |
| Finland | FI | Malta | MT | Croatia | HR |
| France | FR | Netherlands | NL | | |
| Germany | DE | Poland | PL | | |

These materials are provided only for information. It is not an official translation!

Table 1.2

Nomenclature of countries and territories for the external trade statistics of the union and statistics of trade between member states

(Version valid with effect from 1 January 2013)

| Code | Text | Description |
|-----------|----------------------------------|--|
| AD | Andorra | |
| AE | United Arab Emirates | Abu Dhabi, Ajman, Dubai, Fujairah, Ras al Khaimah, Sharjah and Umm al Qaiwain |
| AF | Afghanistan | |
| AG | Antigua and Barbuda | |
| AI | Anguilla | |
| AL | Albania | |
| AM | Armenia | |
| | | |
| AO | Angola | Including Cabinda |
| AQ | Antarctica | Territory south of 60° south latitude; not including the French Southern Territories (TF), Bouvet Island (BV), South Georgia and South Sandwich Islands (GS) |
| AR | Argentina | |
| AS | American Samoa | |
| AT | Austria | |
| AU | Australia | |
| AW | Aruba | |
| AZ | Azerbaijan | |
| BA | Bosnia and Herzegovina | |
| BB | Barbados | |
| BD | Bangladesh | |
| BE | Belgium | |
| BF | Burkina Faso | |
| BG | Bulgaria | |
| BH | Bahrain | |
| BI | Burundi | |
| BJ | Benin | |
| BL | Saint Barthélemy | |
| BM | Bermuda | |
| BN | Brunei Darussalam | Often referred to as Brunei |
| BO | Bolivia, Plurinational State of | Often referred to as Bolivia |
| BQ | Bonaire, Sint Eustatius and Saba | |
| BR | Brazil | |
| BS | Bahamas | |
| BT | Bhutan | |
| BV | Bouvet Island | |
| BW | Botswana | |
| BY | Belarus | Often referred to as Belorussia |

These materials are provided only for information. It is not an official translation!

| | | |
|-----------|------------------------------------|---|
| BZ | Belize | |
| CA | Canada | |
| CC | Cocos Islands (or Keeling Islands) | |
| CD | Congo, Democratic Republic of | Formerly Zaire |
| CF | Central African Republic | |
| CG | Congo | |
| CH | Switzerland | Including the German territory of Büsingen and the Italian municipality of Campione d'Italia |
| CI | Côte d'Ivoire | Often referred to as Ivory Coast |
| CK | Cook Islands | |
| CL | Chile | |
| CM | Cameroon | |
| CN | China | |
| CO | Colombia | |
| CR | Costa Rica | |
| CU | Cuba | |
| CV | Cape Verde | |
| CW | Curaçao | |
| CX | Christmas Island | |
| CY | Cyprus | |
| CZ | Czech Republic | |
| DE | Germany | Including the island of Heligoland; excluding the territory of Büsingen |
| DJ | Djibouti | |
| DK | Denmark | |
| DM | Dominica | |
| DO | Dominican Republic | |
| DZ | Algeria | |
| EC | Ecuador | Including the Galápagos Islands |
| EE | Estonia | |
| EG | Egypt | |
| EH | Western Sahara | |
| ER | Eritrea | |
| ES | Spain | Including the Balearic Islands and the Canary Islands; excluding Ceuta (XC) and Melilla (XL) |
| ET | Ethiopia | |
| FI | Finland | Including the Åland Islands |
| FJ | Fiji | |
| FK | Falkland Islands | |
| FM | Micronesia, Federated States of | Chuuk, Kosrae, Pohnpei and Yap |
| FO | Faroe Islands | |
| FR | France | Including Monaco, the French overseas departments (French Guiana, Guadeloupe, Martinique and Réunion) Mayotte and the French northern part of St Martin |

These materials are provided only for information. It is not an official translation!

| | | |
|-----------|--|---|
| GA | Gabon | |
| GB | United Kingdom | Great Britain, Northern Ireland, Channel Islands and Isle of Man |
| GD | Grenada | Including Southern Grenadines |
| GE | Georgia | |
| GH | Ghana | |
| GI | Gibraltar | |
| GL | Greenland | |
| GM | Gambia | |
| GN | Guinea | |
| GQ | Equatorial Guinea | |
| GR | Greece | |
| GS | South Georgia and South Sandwich Islands | |
| GT | Guatemala | |
| GU | Guam | |
| GW | Guinea-Bissau | |
| GY | Guyana | |
| HK | Hong Kong | Hong Kong Special Administrative Region of the People's Republic of China |
| HM | Heard Island and McDonald Islands | |
| HN | Honduras | Including Swan Islands |
| HR | Croatia | |
| HT | Haiti | |
| HU | Hungary | |
| ID | Indonesia | |
| IE | Ireland | |
| IL | Israel | |
| IN | India | |
| IO | British Indian Ocean Territory | Chagos Archipelago |
| IQ | Iraq | |
| IR | Iran, Islamic Republic of | |
| IS | Iceland | |
| IT | Italy | Including Livigno; excluding the municipality of Campione d'Italia |
| JM | Jamaica | |
| JO | Jordan | |
| JP | Japan | |
| KE | Kenya | |
| KG | Kyrgyz, Republic | |
| KH | Cambodia | |
| KI | Kiribati | |
| KM | Comoros | Anjouan, Grande Comore and Mohéli |
| KN | St Kitts and Nevis | |
| KP | Korea, Democratic People's Republic of | Often referred to as North Korea |

These materials are provided only for information. It is not an official translation!

| | | |
|-----------------------|---------------------------------------|---|
| KR | Korea, Republic of | Often referred to as South Korea |
| KW | Kuwait | |
| KY | Cayman Islands | |
| KZ | Kazakhstan | |
| LA | Lao People's Democratic Republic | Often referred to as Laos |
| LB | Lebanon | |
| LC | St Lucia | |
| LI | Liechtenstein | |
| LK | Sri Lanka | |
| LR | Liberia | |
| LS | Lesotho | |
| LT | Lithuania | |
| LU | Luxembourg | |
| LV | Latvia | |
| LY | Libya | |
| MA | Morocco | |
| MD | Moldova, Republic of | |
| ME | Montenegro | |
| MG | Madagascar | |
| MH | Marshall Islands | |
| MK¹ | Former Yugoslav Republic of Macedonia | |
| ML | Mali | |
| MM | Myanmar | Often referred to as Burma |
| MN | Mongolia | |
| MO | Macao | Special Administrative Region of the People's Republic of China |
| MP | Northern Mariana Islands | |
| MR | Mauritania | |
| MS | Montserrat | |
| MT | Malta | Including Gozo and Comino |
| MU | Mauritius | Mauritius, Rodrigues Island, Agalega Islands and Cargados Carajos Shoals (St Brandon Islands) |
| MV | Maldives | |
| MW | Malawi | |
| MX | Mexico | |
| MY | Malaysia | Peninsular Malaysia and Eastern Malaysia (Labuan, Sabah and Sarawak) |
| MZ | Mozambique | |
| NA | Namibia | |
| NC | New Caledonia | Including Loyalty Islands (Lifou, Maré and Ouvéa) |
| NE | Niger | |
| NF | Norfolk Island | |

¹ Provisional Code that does not affect the definitive denomination of the country to be attributed after the conclusion of the negotiations currently taking place in the United Nations.

These materials are provided only for information. It is not an official translation!

| | | |
|-----------|--|---|
| NG | Nigeria | |
| NI | Nicaragua | Including Corn Islands |
| NL | Netherlands | |
| NO | Norway | Including Svalbard Archipelago and Jan Mayen Island |
| NP | Nepal | |
| NR | Nauru | |
| NU | Niue | |
| NZ | New Zealand | Excluding Ross Dependency (Antarctica) |
| OM | Oman | |
| PA | Panama | Including former Canal Zone |
| PE | Peru | |
| PF | French Polynesia | Marquesas Islands, Society Islands (including Tahiti), Tuamotu Islands, Gambier Islands and Austral Islands. |
| PG | Papua New Guinea | Eastern part of New Guinea; Bismarck Archipelago (including New Britain, New Ireland, Lavongai (New Hanover) and Admiralty Islands); Northern Solomon Islands (Bougainville and Buka); Trobriand Islands, Woodlark Island; d'Entrecasteaux Islands and Louisiade Archipelago. |
| PH | Philippines | |
| PK | Pakistan | |
| PL | Poland | |
| PM | St Pierre and Miquelon | |
| PN | Pitcairn | Including the Ducie, Henderson and Oeno Islands |
| PS | Occupied Palestinian Territory | West Bank (including East Jerusalem) and Gaza Strip |
| PT | Portugal | Including Azores and Madeira |
| PW | Palau | |
| PY | Paraguay | |
| QA | Qatar | |
| RO | Romania | |
| RU | Russian Federation | Often referred to as Russia |
| RW | Rwanda | |
| SA | Saudi Arabia | |
| SB | Solomon Islands | |
| SC | Seychelles | Mahé Island, Praslin Island, La Digue, Frégate and Silhouette; Amirante Islands (including Desroches, Alphonse, Platte and Coëtivy); Farquhar Islands (including Providence); Aldabra Islands and Cosmoledo Islands. |
| SD | Sudan | |
| SE | Sweden | |
| SG | Singapore | |
| SH | Saint Helena, Ascension and Tristan da Cunha | |
| SI | Slovenia | |
| SK | Slovakia | |

These materials are provided only for information. It is not an official translation!

| | | |
|-----------|--------------------------------------|---|
| SL | Sierra Leone | |
| SM | San Marino | |
| SN | Senegal | |
| SO | Somalia | |
| SR | Suriname | |
| SS | South Sudan | |
| ST | Sao Tome and Principe | |
| SV | El Salvador | |
| SX | Sint Maarten (Dutch part) | The island of Saint Martin is divided into the French northern part and the Dutch southern part. |
| SY | Syrian Arab Republic | Often referred to as Syria |
| SZ | Swaziland | |
| TC | Turks and Caicos Islands | |
| TD | Chad | |
| TF | French Southern Territories | Including Kerguelen Islands, Amsterdam Island, Saint-Paul Island, Crozet Archipelago and French scattered Indian Ocean Islands formed by Bassas da India, Europa Island, Glorioso Islands, Juan de Nova Island and Tromelin Island. |
| TG | Togo | |
| TH | Thailand | |
| TJ | Tajikistan | |
| TK | Tokelau | |
| TL | Timor-Leste | |
| TM | Turkmenistan | |
| TN | Tunisia | |
| TO | Tonga | |
| TR | Turkey | |
| TT | Trinidad and Tobago | |
| TV | Tuvalu | |
| TW | Taiwan | Separate customs territory of Taiwan, Penghu, Kinmen and Matsu |
| TZ | Tanzania, United Republic of | Pemba, Zanzibar Island and Tanganyika |
| UA | Ukraine | |
| UG | Uganda | |
| UM | United States Minor Outlying Islands | Including Baker Island, Howland Island, Jarvis Island, Johnston Atoll, Kingman Reef, Midway Islands, Navassa Island, Palmyra Atoll and Wake Island |
| US | United States | Including Puerto Rico |
| UY | Uruguay | |
| UZ | Uzbekistan | |
| VA | Holy See (Vatican City State) | |
| VC | St Vincent and the Grenadines | |
| VE | Venezuela, Bolivarian Republic of | Often referred to as Venezuela |

These materials are provided only for information. It is not an official translation!

| | | |
|----------------------|--|---|
| VG | Virgin Islands, British | |
| VI | Virgin Islands, United States. | |
| VN | Viet Nam | |
| VU | Vanuatu | |
| WF | Wallis and Futuna | Including Alofi Island |
| WS | Samoa | Formerly known as Western Samoa |
| XC | Ceuta | |
| XK | Kosovo | As defined by United Nations Security Council Resolution 1244 of 10 June 1999 |
| XL | Melilla | Including Peñón de Vélez de la Gomera, Peñón de Alhucemas and Chafarinas Islands. |
| XS | Serbia | |
| YE | Yemen | Formerly North Yemen and South Yemen |
| ZA | South Africa | |
| ZM | Zambia | |
| ZW | Zimbabwe | |
| MISCELLANEOUS | | |
| QP | High seas | Maritime domain outside of territorial waters |
| QR | Stores and provisions within the framework of Intra-EU trade | |
| QS | Stores and provisions within the framework of trade with third countries | |
| QV | Countries and territories not specified within the framework of Intra-EU trade | Optional heading |
| QW | Countries and territories not specified within the framework of trade with third countries | Optional heading |
| QX | Countries and territories not specified for commercial or military reasons | Optional heading |

These materials are provided only for information. It is not an official translation!

Annex 2. List of EU territories excluded from Intrastat statistical declarations

| COD | EU member state | <i>EU member states territories which are not included in Intrastat declarations*)</i> |
|------------|------------------------|---|
| DE | Germany | Heligoland |
| GR | Greece | Mount Athos |
| ES | Spain | Canary Islands |
| FR | France | Monaco and French Overseas Departments (French Guyana, Guadeloupe, Martinique and Réunion) and French northern part of Saint Martin |
| IT | Italy | Livigno, the territorial waters of Lugano |
| FI | Finland | Åland Islands |
| GB | United Kingdom | Channel Islands |

*) Exchange of goods with these territories shall not be included in Intrastat declaration. For these goods it will be filled in import/export customs declaration collected by National Agency of Fiscal Administration and monthly send it to National Institute of Statistics.

These materials are provided only for information. It is not an official translation!

Annex 3. Codes of type of transactions

| Codes of Type of Transactions in force since 1 st January 2017 | | |
|--|---|------------|
| Segment A | Segment B | Cod |
| 1. Transactions involving actual or intended transfer of ownership from residents to non-residents against financial or other compensation (except the transactions listed under 2, 7 and 8) | 1. Outright/purchase/sale | 1.1 |
| | 2. Supply for sale on approval or after trial, for consignment or with the intermediation of a commission agent | 1.2 |
| | 3. Barter trade (compensation in kind) | 1.3 |
| | 4. Financial leasing (hire-purchase) ¹ | 1.4 |
| | 9. Other | 1.9 |
| 2. Return and replacement of goods free of charge after registration of the original transaction | 1. Return of goods | 2.1 |
| | 2. Replacement for returned goods | 2.2 |
| | 3. Replacement (e.g. under warranty) for goods not being returned | 2.3 |
| | 9. Other | 2.9 |
| 3. Transactions involving transfer of ownership without financial or in kind compensation (e.g. aid shipments) | | |
| 4. Operations with a view to processing ² under contract (no transfer of ownership to the processor) | 1. Goods expected to return to the initial Member State of dispatch | 4.1 |
| | 2. Goods not expected to return to the initial Member State of dispatch | 4.2 |
| | 3. 3. Goods for processing, treated as assimilated intracommunity acquisitions/deliveries from fiscal point of view | 4.3 |
| 5. Operations following processing under contract (no transfer of ownership to the processor) | 1. Goods returning to the initial Member State of dispatch | 5.1 |
| | 2. Goods not returning to the initial Member State of dispatch | 5.2 |
| | 3. Goods obtained after processing of goods previously declared under code 4.3 | 5.3 |
| 6. Particular transactions recorded for national purposes | | 6 |
| 7. Operations under joint defense projects or other | | 7 |

¹ Financial leasing covers operations where the lease instalments are calculated in such a way as to cover all or virtually all of the value of the goods. The risks and rewards of ownership are transferred to the lessee. At the end of the contract the lessee becomes the legal owner of the goods.

² Processing covers operations (transformation, construction, assembling, enhancement, renovation...) with the objective of producing a new or really improved item. This does not necessarily involve a change in the product classification. Processing activities on a processor's own account are not covered by this item and should be registered under item 1 of column A.

³ Indirect trade refers to:

- deliveries from Romania to other EU Member States, of goods previously imported from third countries (clearance procedures take place in Romania)
- arrivals in Romania from other EU Member States, of goods intended for export to third countries (clearance procedures take place in Romania)

These materials are provided only for information. It is not an official translation!

| Codes of Type of Transactions in force since 1st January 2017 | | |
|--|--|------------|
| Segment A | Segment B | Cod |
| joint intergovernmental production programs | | |
| 8. Transactions involving the supply of building materials and technical equipment under a general construction or civil engineering contract for which no separate invoicing of the goods is required and an invoice for the total contract is issued | | 8 |
| 9. Other transactions which cannot be classified under other codes | 1. Hire, loan, and operational leasing longer than 24 months | 9.1 |
| | 2. Indirect trade ⁽³⁾ | 9.2 |
| | 9. Other | 9.9 |

These materials are provided only for information. It is not an official translation!

Annex 4. Codes of modes of transport

| Code | Description |
|------|--|
| 1 | Sea transport (including motor vehicles and trailers transported on the board of a ship, etc.) |
| 2 | Rail transport (including lorries transported on railway) |
| 3 | Road transport |
| 4 | Air transport |
| 5 | Postal consignment* |
| 7 | Fixed transport installations (for example pipelines)** |
| 8 | Inland waterway transport |
| 9 | Own Propulsion*** |

*Code 5 (Postal consignment) is applied in cases where goods are transferred by a postal service. It is also recommended that the private courier services are included in this category only if the active means of transport it is unknown. Otherwise the relevant code should be used..

As far as possible, packages delivered by express agencies (e.g. UPS, DHL) are to be reported under the proper Code corresponding to the means of transport used. If such information is not available the transaction is to be reported using this code.

**Code 7 (Fixed transport installations) is applied to inhalations for continuous transport such as pipelines or electric power lines. Correctness of this code may be assured by checks for consistency between the mode of transport and the commodity code.

***Code 9 (Own propulsion) is applied for means of transport (mainly aircraft and ships) which are themselves the subject of the trade transaction and cross the border under their own propulsion. In cases where these means of transport are carried on other means of transport (lorries, vessels, trains) the code 9 should not be used.

These materials are provided only for information. It is not an official translation!

Annex 5. Codes of delivery terms

| Signification | | Place indicated, on request |
|---------------|---|--|
| Code | INCOTERMS ICC / ECE Geneva | |
| EXW | Ex Works... | At the factory |
| FCA | Free Carrier... | Named place |
| FAS | Free Along Ship... | Named port of destination |
| FOB | Free On Board... | Named port of destination |
| CFR | Cost and Freight... | Named port of destination |
| CIF | Cost, Insurance and Freight... | Named port of destination |
| CPT | Carriage Paid To agreed destination ... | Named port of destination |
| CIP | Carriage and Insurance Paid to agreed destination... | Named place |
| DAT | Delivered At Terminal... | Agreed place of delivery at the terminal |
| DDP | Delivered Duty Paid... | Agreed place of delivery in the country of arrival |
| XXX | Other terms of delivery than the above mentioned/unknown | |

These materials are provided only for information. It is not an official translation!

Annex 6. List of supplementary units

| Description | |
|-------------------|--|
| c/k | Carats (1 metric carat = 2×10^{-4} kg) |
| ce/el | Number of cells |
| ct/l | Carrying capacity in tonnes (1) |
| g | Gram |
| gi F/S | Gram of fissile isotopes |
| GT | Gross tonnage |
| kg C5 H14 CINO | Kilogram of choline chloride |
| kg H2 O2 | Kilogram of hydrogen peroxide |
| kg K2 O | Kilogram of potassium oxide |
| kg KOH | Kilogram of potassium hydroxide (caustic potash) |
| kg met.am. | Kilogram of methylamines |
| kg N | Kilogram of nitrogen |
| kg NaOH | Kilogram of sodium hydroxide (caustic soda) |
| kg/net eda | Kilogram drained net weight |
| kg P2 O5 | Kilogram of diphosphorus pentaoxide |
| kg 90 % sdt | Kilogram of substance 90 % dry |
| kg U | Kilogram of uranium |
| 1 000 kWh | Thousand kilowatt hours |
| l | Litre |
| 1 000 l | Thousand litres |
| l alc. 100 % | Litre pure (100 %) alcohol |
| m | Metre |
| m 2 | Square metre |
| m 3 | Cubic metre |
| 1 000 m 3 | Thousand cubic metres |
| pa | Number of pairs |
| p/st | Number of items |
| 100 p/st | Hundred items |
| 1 000 p/st | Thousand items |
| TJ | Terajoule (gross calorific value) |
| c/k | Carats (1 metric carat = 2×10^{-4} kg) |

These materials are provided only for information. It is not an official translation!

Annex 7. Glossary

| | |
|--|---|
| Community goods | <p>-Goods entirely obtained in customs territory of the Community or</p> <p>-Goods from countries or territories not forming part of the customs territory of the Community released for free circulation in a EU Member State or</p> <p>-Goods obtained from both types of aforementioned goods.</p> |
| Non-Community goods | Other goods than those referred to as Community goods |
| Specific goods and movements | Goods or movements which, by their very nature, call for specific provisions, and in particular industrial plants, vessels and aircraft, sea products, goods delivered to vessels and aircraft, staggered consignments, military goods, goods to or from offshore installations, spacecraft, motor vehicle and aircraft parts and waste products; |
| Extra-Community Trade (exchange of goods) | The exchange of goods between Member States of European Union and countries which are not part of European Union |
| International trade | A Member State's international exchange of goods is the sum of its Intra-EU and Extra-EU trade in goods |
| Intra-EU trade in goods | Trade in goods between the Member States of European Union |
| Triangular trade | Triangular trade is the term used to describe a transaction where the three parties involved are in different EU Member States, the invoicing route goes from A to B and B to C but the goods themselves move directly from A to C. Intrastat record the physical movement of goods, so in this situation economic operator A records a dispatch to C, and C records an arrival from A. Economic operator B, however, is not required to do anything for Intrastat purposes |
| CUI | Unique Identification Code - Tax identification number assigned by Ministry of Finance for each economic operator |
| Identification code trade partner of PSI | It is specified the tax identification code of trading partner to whom the goods are physically sent. This field will be filled only for dispatches. |
| Dispatch of community goods | Goods delivered from Romania to other EU Member States, released for free circulation within the European Union and entered in the statistical territory of other EU Member States. |

These materials are provided only for information. It is not an official translation!

| | |
|--|--|
| PSI (provider of statistical information) | Economic operator registered to VAT (has a VAT number), who delivered goods to another EU Member State or receives goods from another EU Member State and can be obliged to provide statistical data on goods dispatched to or arrived from another EU Member State to Intrastat |
| Flow | There are two types of exchange of goods flows: flows to a given Member State (arrivals) and flows from a given Member State (dispatches) of goods. |
| Arrival of community goods | Goods entered in Romania from other EU Member States, released for free circulation within the European Union and delivered in Romania from statistical territory of other EU Member States. |
| Nature of transaction | The different characteristics (purchase / sale, custom work, etc.) useful to distinguish between transactions. |
| Combined Nomenclature (CN) | Common Customs tariff (eight-digit commodity nomenclature) and statistical nomenclature used by the Member States of EU for identification and classification of various commodities |
| Economic operator | Legal persons or institutions governed by public law etc. registered for VAT purposes in Romania |
| Member State of destination | Member State as defined by its statistical territory in which goods arrive from another Member State. |
| Member State of expedition | Member State as defined by its statistical territory from which goods are dispatched to another Member State |
| VAT | Value added tax |
| Intra-EU transaction | Any operation, whether commercial or not, which leads to a physical movement of goods among EU Member States, included in Intrastat. |
| Country of origin | The country where goods are produced or where they underwent their last substantial transformation. |
| Third countries | Countries or states that are not members of EU |
| SU | Additional units, i.e. units measure the amount entered or sent (e.g. number of items, liters, meters, etc.) other than net mass measurement units (kilogram), as specified in Commission Regulation updating the combined nomenclature every year. |
| Intrastat | Is a system for collecting statistical data on trade in goods between Member States of the European Union (EU). |
| Extrastat | Is a system for collecting statistical data on trade in goods between Member States of European Union (EU) and third countries (countries non –EU). |
| Statistical threshold for | Represents the annual value of Intra-EU trade in goods, below which economic operators are exempted from providing any |

These materials are provided only for information. It is not an official translation!

| | |
|--|---|
| exclusion | information for Intrastat statistical system. |
| Statistical threshold for reporting statistical value | Value threshold for reporting statistical value which applies to those providers of Intrastat statistical information that have registered annual values above the threshold value set for Intrastat statistical value. |
| Third Party Declaring (TPD) | A firm /agent (third party declaring – TPD) which complete and submit Intrastat statistical declaration in the name of an economic operator obliged to provide Intrastat statistical data – PSI. |
| Revisions of data | Modification, deletion or addition of data. |

These materials are provided only for information. It is not an official translation!

Annex 8. Distance in kilometers between main European cities

| Pe sosea Pe calea ferată | Amsterdam | Atena | Barcelona | Belgrad | Berlin | Berna | Bruxelles | Budapesta | Bucuresti | Copenhaga | Dusseldorf | Frankfurt | Hamburg | Helsinki | Istanbul | Lisabona | Londra | Madrid | Milano | Marsilia | Munchen | Oslo | Paris | Praga | Roma | Sofia | Stockholm | Stuttgart | Venetia | Varsovia | Viena | Zurich |
|--------------------------------|-----------|-------|-----------|---------|--------|-------|-----------|-----------|-----------|-----------|------------|-----------|---------|----------|----------|----------|--------|--------|--------|----------|---------|------|-------|-------|------|-------|-----------|-----------|---------|----------|-------|--------|
| Amsterdam | - | 3130 | 1550 | 1840 | 670 | 840 | 230 | 1440 | 2280 | 820 | 240 | 470 | 470 | 1860 | 2850 | 2330 | 410 | 1780 | 1130 | 1230 | 850 | 1290 | 520 | 920 | 1750 | 2260 | 1460 | 710 | 1430 | 1230 | 1190 | 840 |
| Atena | 3130 | - | 2870 | 1280 | 2580 | 2290 | 3010 | 1690 | 1300 | 3230 | 2890 | 2660 | 2880 | 3970 | 1190 | 4120 | 3150 | 3470 | 1860 | 2360 | 2190 | 3700 | 3720 | 2250 | 1460 | 910 | 3870 | 2430 | 1770 | 2360 | 1940 | 2170 |
| Barcelona | 1550 | 2870 | - | 2040 | 1860 | 910 | 1330 | 2020 | 2670 | 2180 | 1380 | 1340 | 1830 | 3220 | 3120 | 1290 | 1470 | 630 | 950 | 520 | 1340 | 2650 | 1040 | 1740 | 1410 | 2500 | 2820 | 1270 | 1280 | 2400 | 1780 | 1030 |
| Belgrad | 1840 | 1280 | 2040 | - | 1310 | 1520 | 1730 | 410 | 630 | 1750 | 1610 | 1380 | 1590 | 2790 | 1000 | 3320 | 2050 | 2670 | 1120 | 1560 | 970 | 2380 | 1830 | 960 | 1400 | 410 | 2390 | 1200 | 830 | 1080 | 660 | 1400 |
| Berlin | 670 | 2580 | 1860 | 1310 | - | 950 | 810 | 900 | 1800 | 450 | 590 | 540 | 300 | 1490 | 2320 | 2900 | 1030 | 2340 | 1130 | 1550 | 600 | 1070 | 1080 | 350 | 1560 | 1720 | 1090 | 630 | 1130 | 560 | 650 | 830 |
| Berna | 840 | 2290 | 910 | 1520 | 950 | - | 670 | 1150 | 2190 | 1330 | 700 | 470 | 980 | 2370 | 2520 | 2110 | 960 | 1530 | 400 | 580 | 440 | 1800 | 590 | 840 | 1030 | 1920 | 1970 | 370 | 700 | 1510 | 900 | 130 |
| Bruxelles | 230 | 3010 | 1330 | 1730 | 810 | 670 | - | 1380 | 2280 | 950 | 210 | 410 | 600 | 1990 | 2740 | 2100 | 320 | 1550 | 950 | 1060 | 790 | 1420 | 290 | 920 | 1580 | 2140 | 590 | 550 | 1250 | 1370 | 1130 | 670 |
| Budapesta | 1440 | 1690 | 2020 | 410 | 900 | 1150 | 1380 | - | 900 | 1350 | 1200 | 970 | 1190 | 2280 | 1420 | 3300 | 1700 | 2740 | 1070 | 1570 | 690 | 2010 | 1540 | 560 | 1250 | 820 | 1990 | 930 | 790 | 670 | 250 | 1020 |
| Bucuresti | 2280 | 1300 | 2670 | 630 | 1800 | 2190 | 2280 | 900 | - | 2250 | 2100 | 1870 | 2090 | 2820 | 700 | 3950 | 2590 | 3300 | 1750 | 2190 | 1600 | 2870 | 2470 | 1490 | 2030 | 390 | 2890 | 1830 | 1460 | 1210 | 1150 | 2050 |
| Copenhaga | 820 | 3230 | 2180 | 1750 | 450 | 1330 | 950 | 1350 | 2250 | - | 840 | 860 | 350 | 1040 | 2760 | 3050 | 1200 | 2500 | 1640 | 1920 | 1050 | 620 | 1240 | 800 | 2010 | 2160 | 640 | 1060 | 1580 | 940 | 1110 | 1300 |
| Dusseldorf | 240 | 2890 | 1380 | 1610 | 590 | 700 | 210 | 1200 | 2100 | 840 | - | 230 | 490 | 1880 | 2620 | 2310 | 580 | 1760 | 980 | 1070 | 620 | 1310 | 500 | 750 | 1610 | 2020 | 1480 | 480 | 1150 | 1150 | 950 | 700 |
| Frankfurt | 470 | 2660 | 1340 | 1380 | 540 | 470 | 410 | 970 | 1870 | 860 | 230 | - | 510 | 1900 | 2390 | 2380 | 780 | 1830 | 780 | 1060 | 380 | 1330 | 570 | 510 | 1410 | 1790 | 1500 | 240 | 910 | 1120 | 720 | 470 |
| Hamburg | 470 | 2880 | 1830 | 1590 | 300 | 980 | 600 | 1190 | 2090 | 350 | 490 | 510 | - | 1390 | 2600 | 2700 | 850 | 2150 | 1240 | 1560 | 770 | 820 | 890 | 630 | 1700 | 2010 | 990 | 710 | 1300 | 860 | 910 | 930 |
| Helsinki | 1860 | 3970 | 3220 | 2790 | 1490 | 2370 | 1990 | 2280 | 2820 | 1040 | 1880 | 1900 | 1390 | - | 3520 | 4090 | 2270 | 3540 | 2620 | 2950 | 2090 | 970 | 2280 | 1840 | 3050 | 3200 | 400 | 2120 | 2620 | 1610 | 2140 | 2320 |
| Istanbul | 2850 | 1190 | 3120 | 1000 | 2320 | 2520 | 2740 | 1420 | 700 | 2760 | 2620 | 2390 | 2600 | 3520 | - | 4460 | 3160 | 3810 | 2120 | 2560 | 1970 | 3390 | 2630 | 1960 | 2400 | 600 | 3410 | 2200 | 1840 | 2090 | 1670 | 2440 |
| Lisabona | 2330 | 4120 | 1290 | 3320 | 2900 | 2110 | 2100 | 3300 | 3950 | 3050 | 2310 | 2380 | 2700 | 4090 | 4460 | - | 2240 | 650 | 2340 | 1790 | 2550 | 3520 | 1810 | 2950 | 2720 | 3730 | 3690 | 2480 | 2540 | 3620 | 3010 | 2240 |
| Londra | 410 | 3150 | 1470 | 2050 | 1030 | 960 | 320 | 1700 | 2590 | 1200 | 580 | 780 | 850 | 2270 | 3160 | 2240 | - | 1690 | 1290 | 1250 | 1200 | 1670 | 430 | 1290 | 1920 | 2500 | 1820 | 880 | 1590 | 1590 | 1500 | 950 |
| Madrid | 1780 | 3470 | 630 | 2670 | 2340 | 1530 | 1550 | 2740 | 3300 | 2500 | 1760 | 1830 | 2150 | 3540 | 3810 | 650 | 1690 | - | 1690 | 1140 | 1970 | 2970 | 1260 | 2370 | 2040 | 3220 | 3140 | 1900 | 1910 | 3040 | 2430 | 1650 |
| Milano | 1130 | 1860 | 950 | 1120 | 1130 | 400 | 950 | 1070 | 1750 | 1640 | 980 | 780 | 1240 | 2620 | 2120 | 2340 | 1290 | 1690 | - | 580 | 590 | 2060 | 860 | 990 | 630 | 1530 | 2230 | 550 | 300 | 1600 | 920 | 310 |
| Marsilia | 1230 | 2360 | 520 | 1560 | 1550 | 580 | 1060 | 1570 | 2190 | 1920 | 1070 | 1060 | 1560 | 2950 | 2560 | 1790 | 1520 | 1140 | 580 | - | 1030 | 2380 | 800 | 1430 | 930 | 1970 | 2560 | 960 | 800 | 2100 | 1420 | 720 |
| Munchen | 850 | 2190 | 1340 | 970 | 600 | 440 | 790 | 690 | 1600 | 1050 | 620 | 380 | 770 | 2090 | 1970 | 2550 | 1200 | 1970 | 590 | 1030 | - | 1590 | 870 | 400 | 960 | 1380 | 1680 | 2330 | 530 | 1070 | 440 | 310 |
| Oslo | 1290 | 3700 | 2650 | 2380 | 1070 | 1800 | 1420 | 2010 | 2870 | 620 | 1310 | 1330 | 820 | 970 | 3390 | 3520 | 1670 | 2970 | 2060 | 2380 | 1590 | - | 1710 | 1440 | 2520 | 2790 | 570 | 1530 | 2120 | 1590 | 1740 | 1770 |
| Paris | 520 | 2720 | 1040 | 1830 | 1080 | 590 | 290 | 1540 | 2470 | 1240 | 500 | 570 | 890 | 2280 | 2830 | 1810 | 430 | 1260 | 860 | 800 | 870 | 1710 | - | 1050 | 1500 | 2240 | 1880 | 640 | 1160 | 1640 | 1310 | 580 |
| Praga | 920 | 2250 | 1740 | 960 | 350 | 840 | 920 | 560 | 1490 | 800 | 750 | 510 | 630 | 1840 | 1960 | 2950 | 1290 | 2370 | 990 | 1430 | 400 | 1440 | 1050 | - | 1360 | 1370 | 1450 | 480 | 840 | 670 | 300 | 710 |
| Roma | 1750 | 1460 | 1410 | 1400 | 1560 | 1030 | 1580 | 1250 | 2030 | 2010 | 1610 | 1410 | 1700 | 3050 | 2400 | 2720 | 1920 | 2040 | 630 | 930 | 960 | 2520 | 1500 | 1360 | - | 1810 | 2650 | 1180 | 580 | 1870 | 1200 | 940 |
| Sofia | 2260 | 910 | 2500 | 410 | 1720 | 1920 | 2140 | 820 | 390 | 2160 | 2020 | 1790 | 2010 | 3200 | 600 | 3730 | 2500 | 3220 | 1530 | 1970 | 1380 | 2790 | 2240 | 1370 | 1810 | - | 2800 | 1610 | 1240 | 1490 | 1070 | 1810 |
| Stockholm | 1460 | 3870 | 2820 | 2390 | 1090 | 1970 | 1590 | 1990 | 2890 | 640 | 1480 | 1500 | 990 | 400 | 3410 | 3690 | 1820 | 3140 | 2230 | 2560 | 1680 | 570 | 1880 | 1450 | 2650 | 2800 | - | 1710 | 2210 | 1600 | 1760 | 1950 |
| Stuttgart | 710 | 2430 | 1270 | 1200 | 630 | 370 | 550 | 930 | 1830 | 1060 | 480 | 240 | 710 | 2120 | 2200 | 2480 | 880 | 1900 | 550 | 960 | 230 | 1530 | 640 | 480 | 1180 | 1610 | 1710 | - | 760 | 1150 | 670 | 240 |
| Venetia | 1430 | 1770 | 1280 | 830 | 1130 | 700 | 1250 | 790 | 1460 | 1580 | 1150 | 910 | 1300 | 2620 | 1840 | 2540 | 1590 | 1910 | 300 | 800 | 530 | 2120 | 1160 | 840 | 580 | 1240 | 2210 | 760 | - | 1310 | 630 | 610 |
| Varsovia | 1230 | 2360 | 2400 | 1080 | 560 | 1510 | 1370 | 670 | 1210 | 940 | 1150 | 1120 | 860 | 1610 | 2090 | 3620 | 1590 | 3040 | 1600 | 2100 | 1070 | 1590 | 1640 | 670 | 1870 | 1490 | 1600 | 1150 | 1310 | - | 680 | 1380 |
| Viena | 1190 | 1940 | 1780 | 660 | 650 | 900 | 1130 | 250 | 1150 | 1110 | 950 | 720 | 910 | 2140 | 1670 | 3010 | 1500 | 2430 | 920 | 1420 | 440 | 1740 | 1310 | 300 | 1200 | 1070 | 1760 | 670 | 630 | 680 | - | 770 |
| Zurich | 840 | 2170 | 1030 | 1400 | 830 | 130 | 670 | 1020 | 2050 | 1300 | 700 | 470 | 930 | 2320 | 2440 | 2240 | 950 | 1650 | 310 | 720 | 310 | 1770 | 580 | 710 | 940 | 1810 | 1950 | 240 | 610 | 1380 | 770 | - |

These materials are provided only for information. It is not an official translation!

Annex 9. Distance in kilometers between main cities of Romania

| Pe sosea Pe calea ferată | Bucuresti | Arad | Bacau | Baia Mare | Bistrita | Brasov | Cluj Napoca | Constanta | Craiova | Deva | Tr. Severin | Galati | Galati | Iasi | Mangalia | Miercurea Ciuc | Oradea | Piatra Neamt | Pitesti | Ploiesti | Predeal | Resita | Ramnicu Valcea | Sibiu | Sinaia | Suceava | Timisoara | Targu Jiu | Targu Mures | Tulcea | Vatra Dornei |
|-----------------------------|-----------|------|-------|-----------|----------|--------|-------------|-----------|---------|------|-------------|--------|--------|------|----------|----------------|--------|--------------|---------|----------|---------|--------|----------------|-------|--------|---------|-----------|-----------|-------------|--------|--------------|
| Bucuresti | - | 561 | 287 | 594 | 426 | 171 | 433 | 266 | 229 | 389 | 336 | 246 | 62 | 411 | 316 | 269 | 585 | 354 | 113 | 60 | 146 | 502 | 180 | 272 | 127 | 432 | 571 | 237 | 347 | 367 | 556 |
| Arad | 546 | - | 596 | 307 | 392 | 426 | 283 | 821 | 402 | 172 | 285 | 741 | 625 | 734 | 294 | 515 | 116 | 630 | 393 | 542 | 461 | 197 | 387 | 268 | 480 | 610 | 52 | 217 | 386 | 831 | 538 |
| Bacau | 300 | 712 | - | 454 | 299 | 180 | 355 | 415 | 427 | 426 | 541 | 190 | 351 | 126 | 472 | 144 | 477 | 60 | 313 | 247 | 204 | 608 | 374 | 320 | 225 | 148 | 593 | 501 | 255 | 318 | 268 |
| Baia Mare | 625 | 308 | 546 | - | 160 | 425 | 154 | 812 | 546 | 328 | 546 | 644 | 658 | 496 | 807 | 358 | 213 | 388 | 426 | 539 | 403 | 482 | 420 | 300 | 447 | 361 | 381 | 464 | 203 | 792 | 232 |
| Bistrita | 452 | 390 | 420 | 190 | - | 258 | 124 | 651 | 453 | 301 | 512 | 484 | 490 | 321 | 695 | 223 | 276 | 241 | 393 | 366 | 283 | 435 | 332 | 233 | 302 | 197 | 444 | 428 | 89 | 564 | 83 |
| Brasov | 166 | 433 | 312 | 459 | 286 | - | 271 | 387 | 247 | 254 | 362 | 330 | 238 | 306 | 429 | 98 | 423 | 242 | 133 | 114 | 25 | 429 | 194 | 140 | 44 | 328 | 417 | 322 | 168 | 392 | 376 |
| Cluj Napoca | 497 | 274 | 470 | 194 | 119 | 331 | - | 658 | 392 | 174 | 392 | 601 | 504 | 430 | 699 | 253 | 152 | 326 | 278 | 385 | 287 | 328 | 266 | 167 | 306 | 327 | 334 | 310 | 103 | 663 | 218 |
| Constanta | 225 | 817 | 360 | 809 | 677 | 360 | 691 | - | 500 | 644 | 602 | 225 | 329 | 485 | 44 | 485 | 846 | 488 | 339 | 273 | 460 | 768 | 439 | 527 | 341 | 563 | 829 | 568 | 555 | 124 | 695 |
| Craiova | 209 | 381 | 511 | 598 | 528 | 335 | 412 | 434 | - | 249 | 107 | 452 | 295 | 558 | 539 | 345 | 432 | 507 | 122 | 228 | 274 | 273 | 126 | 225 | 225 | 575 | 329 | 102 | 342 | 505 | 545 |
| Deva | 455 | 149 | 589 | 354 | 303 | 284 | 184 | 644 | 246 | - | 229 | 587 | 455 | 566 | 494 | 355 | 183 | 459 | 211 | 371 | 290 | 164 | 216 | 177 | 309 | 501 | 156 | 146 | 233 | 649 | 396 |
| Tr. Severin | 325 | 269 | 625 | 578 | 504 | 459 | 526 | 548 | 114 | 178 | - | 544 | 411 | 722 | 591 | 544 | 618 | 685 | 256 | 282 | 423 | 155 | 245 | 344 | 404 | 770 | 210 | 148 | 517 | 657 | 627 |
| Galati | 230 | 745 | 187 | 636 | 463 | 310 | 560 | 259 | 439 | 594 | 592 | - | 318 | 253 | 285 | 288 | 694 | 247 | 330 | 214 | 295 | 732 | 398 | 478 | 276 | 338 | 747 | 526 | 498 | 128 | 457 |
| Giurgiu | 61 | 691 | 381 | 686 | 534 | 232 | 558 | 286 | 300 | 546 | 348 | 291 | - | 460 | 329 | 322 | 656 | 421 | 168 | 120 | 201 | 514 | 238 | 392 | 182 | 508 | 548 | 315 | 509 | 395 | 519 |
| Iasi | 399 | 737 | 159 | 538 | 412 | 459 | 462 | 428 | 608 | 622 | 711 | 229 | 490 | - | 546 | 266 | 582 | 136 | 439 | 420 | 332 | 736 | 500 | 406 | 351 | 135 | 746 | 629 | 327 | 386 | 254 |
| Mangalia | 268 | 831 | 403 | 852 | 718 | 403 | 735 | 43 | 472 | 508 | 646 | 302 | 351 | 471 | - | 280 | 614 | 532 | 425 | 318 | 404 | 812 | 490 | 572 | 385 | 629 | 765 | 612 | 636 | 167 | 739 |
| Miercurea-Ciuc | 261 | 528 | 217 | 364 | 191 | 95 | 288 | 455 | 430 | 379 | 502 | 288 | 352 | 373 | 490 | - | 405 | 144 | 231 | 209 | 123 | 517 | 287 | 239 | 142 | 256 | 515 | 420 | 150 | 417 | 287 |
| Oradea | 651 | 121 | 623 | 193 | 729 | 464 | 153 | 844 | 502 | 270 | 405 | 713 | 741 | 615 | 888 | 441 | - | 478 | 460 | 573 | 439 | 247 | 418 | 300 | 458 | 479 | 168 | 323 | 235 | 813 | 370 |
| Piatra Neamt | 360 | 772 | 60 | 606 | 480 | 372 | 540 | 420 | 571 | 656 | 614 | 247 | 453 | 219 | 463 | 277 | 43 | - | 377 | 253 | 267 | 623 | 442 | 327 | 286 | 121 | 619 | 584 | 219 | 365 | 232 |
| Pitesti | 108 | 525 | 392 | 652 | 311 | 256 | 482 | 333 | 142 | 388 | 227 | 341 | 187 | 507 | 376 | 351 | 635 | 452 | - | 116 | 154 | 393 | 61 | 190 | 135 | 461 | 411 | 187 | 290 | 383 | 488 |
| Ploiesti | 59 | 543 | 243 | 569 | 392 | 110 | 441 | 250 | 268 | 394 | 399 | 200 | 150 | 349 | 293 | 205 | 594 | 301 | 149 | - | 86 | 521 | 177 | 254 | 67 | 395 | 531 | 317 | 382 | 278 | 496 |
| Predeal | 140 | 459 | 338 | 485 | 311 | 26 | 357 | 334 | 309 | 310 | 381 | 284 | 231 | 435 | 377 | 121 | 510 | 398 | 230 | 84 | - | 415 | 219 | 168 | 19 | 388 | 450 | 322 | 199 | 377 | 401 |
| Resita | 478 | 201 | 701 | 492 | 489 | 423 | 322 | 698 | 269 | 159 | 166 | 690 | 493 | 760 | 738 | 500 | 319 | 761 | 411 | 528 | 449 | - | 370 | 286 | 454 | 671 | 131 | 248 | 381 | 810 | 560 |
| Ramnicu-Valcea | 276 | 385 | 516 | 467 | 359 | 204 | 297 | 510 | 131 | 234 | 204 | 514 | 367 | 663 | 603 | 299 | 450 | 602 | 185 | 335 | 440 | 372 | - | 99 | 200 | 522 | 376 | 122 | 220 | 444 | 423 |
| Sibiu | 315 | 284 | 461 | 368 | 260 | 149 | 198 | 509 | 230 | 135 | 302 | 459 | 406 | 608 | 662 | 244 | 351 | 521 | 284 | 259 | 175 | 324 | 99 | - | 187 | 468 | 325 | 221 | 121 | 532 | 324 |
| Sinaia | 121 | 478 | 355 | 504 | 330 | 45 | 376 | 186 | 290 | 329 | 362 | 265 | 212 | 414 | 358 | 140 | 529 | 317 | 301 | 62 | 19 | 468 | 249 | 194 | - | 407 | 463 | 322 | 306 | 358 | 329 |
| Suceava | 447 | 599 | 145 | 401 | 275 | 457 | 325 | 505 | 656 | 485 | 738 | 322 | 538 | 137 | 548 | 362 | 478 | 205 | 537 | 288 | 431 | 623 | 598 | 499 | 412 | - | 661 | 656 | 311 | 466 | 110 |
| Timisoara | 533 | 59 | 744 | 371 | 469 | 450 | 331 | 758 | 324 | 166 | 219 | 759 | 624 | 788 | 801 | 546 | 178 | 804 | 466 | 560 | 495 | 141 | 400 | 301 | 493 | 661 | - | 306 | 372 | 853 | 542 |
| Targu Jiu | 315 | 291 | 617 | 492 | 421 | 441 | 540 | 535 | 106 | 140 | 148 | 535 | 405 | 714 | 578 | 536 | 410 | 677 | 248 | 374 | 415 | 303 | 236 | 336 | 396 | 762 | 331 | - | 355 | 834 | 545 |
| Targu Mures | 448 | 324 | 388 | 285 | 112 | 282 | 127 | 642 | 403 | 175 | 453 | 459 | 539 | 505 | 685 | 187 | 280 | 448 | 473 | 392 | 303 | 354 | 288 | 389 | 327 | 368 | 334 | 294 | - | 566 | 174 |
| Tulcea | 331 | 923 | 466 | 925 | 747 | 466 | 798 | 176 | 540 | 750 | 641 | 365 | 420 | 534 | 169 | 561 | 950 | 526 | 439 | 356 | 440 | 809 | 607 | 615 | 452 | 611 | 864 | 646 | 748 | - | 727 |
| Vatra Dornei | 563 | 483 | 261 | 285 | 159 | 423 | 209 | 621 | 540 | 369 | 622 | 448 | 654 | 253 | 664 | 328 | 362 | 321 | 421 | 504 | 648 | 507 | 482 | 383 | 467 | 116 | 545 | 540 | 196 | 582 | - |